



Rev. 2

Introduction

Thank you for choosing WINLIVE by Promusicsoftware, the first musical repertoire management program with specific Karaoke features, whose first version dates back to November 6th, 1994. The intention of its founder, **Leonardo Di Pinto** was to create a program that could work with different file formats then to manage them in a simple and immediate way. **WINLIVE HOME SYNTH 11** version, available for both Mac OSX and Windows, is designed for a professional use. Thanks to its last update, it is particularly appreciated by singer-performers, who require a reliable program to manage their own musical repertoire, compatible and adaptable to their proper tools in order to look like being on stage.

Karaoke enthusiasts, who like to customize their performances, also appreciate it very much. HOME SYNTH is WINLIVE's commercial version, therefore third parts assignment, unlawful copy of the license and any other copyright piracy action concerning the software are forbidden.

Reverse Engineering implementation, code and graphic resources editing as well as reproducing all files even partially are forbidden and open to legal prosecution. We decline any responsibility from using the software improperly and/or damaging the operating system as well as losing data.

To know more, visit our website:

www.promusicsoftware.com

WINLIVE is a Pro Music Software brand

INSTALLATION AND REQUIREMENTS

To install WINLIVE just run the setup and then follow the instructions on the screen. Normally, at the end of the installation, the software requires the entry of your **PERSONAL ACCOUNT** and the **SERIAL NUMBER**, which can be found in your e-mail (if the software was bought online) or in the package of the software (if bought in store). You can choose the demonstrative mode, in case you do not have the license, in order to discover all Winlive features. DEMO version has a limited use (it can only manage 20 songs) and its public use is expressly prohibited. FULL version has no restrictions.

Internet connection is necessary to activate the software. When the computer is connected to the internet, you can simply entry **PERSONAL ACCOUNT**, **SERIAL NUMBER**, and all required data.

When an **ID COMPUTER** appear, you just need to click on **ACTIVATE YOUR COPY HERE**.

If your computer is not connected to the internet, you should install software setup, then insert **PERSONAL ACCOUNT**, **SERIAL NUMBER**, and all required data. At this point, an **ID COMPUTER** will appear. From any device connected to the internet, connect to our website:

www.promusicsoftware.com

Go to Activations→ insert **PERSONAL ACCOUNT** and **SERIAL NUMBER** to log in your personal account. Click on **NEW ACTIVATION**, so insert the **ID COMPUTER** generated by the program. Then a license number will appear. Copy it and paste it in the blank line as required by the program.

A YOUTUBE SERVICE is provided with the software.

In all cases, assistance by email and telephone is guaranteed.

Watch the video tutorial to learn more about the installation of the software



<https://youtu.be/KY4INKBAdAk>

* System requirements recommended for Windows: Ram 2Gb, 200 Mb Free space on Hard Drive, CPU i3 or better

* System requirements recommended for Mac: Ram 3Gb, 1200 Mb Free space on Hard Drive, CPU i3 or better

* *Compatible with Windows 7, Windows 8/8.1 and Windows 10, 32 bit or 64 bit*

* *Compatible with Mac osX (tested from High Sierra to Big Sur)*

Note: the recommended system requirements grant the functioning of the software and the execution of the songs by the program but it could be necessary to deactivate all graphic effects to get a better performance, which could decline substantially during the reproduction of CDG or VIDEO files.

The software could work with older versions of Windows but correct functioning is not granted.

* Without the recommended system requirements, starting the program could result slower due to the swapping on the HD and the slowness of the processor.

* Some antivirus could slower the initiation of the program. If the software sticks on start on "Check Antivirus" for a long time, deactivate the antivirus temporarily.

Functionalities

WINLIVE HOME SYNTH is not just a Karaoke software but also a feature-rich music player and management program. WINLIVE HOME SYNTH provides a real-time playback management. Synchronized lyrics and chords contained in the files are easy to see and read. It is also possible to synchronize lyrics and chords on empty files or on files that do not provide them at first. WINLIVE HOME SYNTH manages up to **42 playlists**, named **SONGLIST**, of which 39 in Database, 1 temporary (F10) and 2 Song Folder List (F11 and F12 for external loadings outside of the database). It is possible to act on different parameters of a music file: you can start and stop it at any time, change the rhythm, the tone (any format audio and video), the instruments, the volume, the pan, etc.... till the single drum notes, everything in real time!

Great improvement in the listening of Midifiles is provided by our **Synthesizer software** (Winlive Synth Orchestra) included in the program aiming to get obtain a real sound.

We recommend to our users not to use illegal copies of the software, reminding not only that holding software without any number of registration is a criminal offence, but also that the same pirate software contain dangerous virus that can cause system crash.

Main features of WINLIVE HOME SYNTH 11

(in bold the novelties compared to the previous version)

Player section

- * Playback multimedia files(midi, kar, mp3, mp3+lrc, wav, cdg, cdg-zip, wmt, avi, mpg, mp4, flv, wma, lrc, txt, rtf, jpg, gif, bmp, ytb youtube, pdf)

- * Read WMT (Winlive Multi Track) multitrack audio files up to 16 tracks including any txt and pdf files

- * Key change management for Midi, Audio, Multitrack Audio and Video files

- * Support for dual monitors (karaoke monitors) also for video and cdg files

Scrolling text (for Windows version only)

- * New graphics, new icons and innovative functions that can be called directly with the buttons

Images as moving background can also be called at random from an image folder.

- * New sound library (for Synth version only)

- * Accelerated database management

Ability to zoom PDF files for proper display on the monitor

Youtube functions with forward/reverse controls / stop etc..

Audio mixing even with video files

Import of Vanbasco playlists with tonality parameters, mute channels, etc..

Winlive Dj Control with BMP recognition for audio files with real-time effects

Metrodrummer (electronic drums with preset rhythms)

Midi remix styled using a library with more than 250 rhythms

- * New available rhythms

Ability to easily replace the rhythm of a midifile and save it in database

Audio Recording on Midi and Audio

Advanced mixing editor with max 5 different patterns that can be called in real time

Instant booking with fade out or mixing between song Audio and Midi

Melody preview bar

Built-in video codec repair/installation function

Automatically search orphaned files in PC folders and subfolders

Orphan highlighting (missing file) already in the songlist

Audio Samples editor to insert up to 100 samples in real time
 Virtual storage of file changes
 Text import in TXT, RTF, PDF format (electronic readout mode)
 Portrait (vertical) tablet support for windows
 Various karaoke display methods
 Assign the melody to any midi channel (default midi channel 4)
 Possibility to associate a text, a pdf or an image to an Audio or Midi track
 Compatible with Songservice karaoke format (M-live)
 Extraction and conversion from Cd to mp3 or wave
 Performance 'Quick icons' buttons for instant access to various sections
 Inserting images as background
 Cover function to vary the feeling of the midifiles
 Notes display on piano keyboard for educational use
 * Dozens of new features suggested by our users
 * Youtube feature renewal only available for WINLIVE 11 series versions *** (see annotations)
 Intuitive, functional and performing
 Section SYNTH (PLUG INS SYNTH)
 New high-quality 96 MB GS/GM+ internal sound bench
 96 MB Wavetable composed of 32 Drumkits and 344 Instrumental Sounds
 New increasingly performing sounds to increase the quality of your midifiles
 Possibility to import personal benches SF2

It is recommended, however, to upload the latest version to keep "up" with the continuous innovations of Winlive.

Main features of WINLIVE HOME SYNTH 11

(The ones in bold are the new features compared to the previous version)

SYNTH section (SYNTH ORCHESTRA)

- * **New Internal GS/GM+ sound bank of 96 MB HI-Quality Wavetable (SFX sounds included)**
- * **Wavetable with 32 drum kits and 344 sounds**
- * **New and more and more performing sounds to increase the quality of your midifiles**

Implementation of low latency WASAPI drivers

It is possible with low latency to play a midi keyboard directly linked to your computer

Winlive digital piano, up to 4 part sound synthesizer

ASIO Driver management

Convert MIDI to Wave or Mp3 directly with karaoke and chords included

Main volume, Compressor, filter enhancer on Midi Engine

Delay effect management on every midi track

Multi effect management on sounds from inner Synth with more than 20 selectable MFX on every midi track

* **Notes for Mac version:** some functions on Mac computer may change or not exist compared with PC
 Windows version (mainly Scrolling text, combination of effects to sounds, YouTube tracks execution external to program)

After the purchase, automatically, you will receive via email the activation codes.

You can use up to 3 activations per license even on different computers

For further activations please contact Promusicsoftware

Note: if you replace or format the hard disk, an activation is lost

Info: WINLIVE can perform its songs in various ways.

1) We can play one or more songs by dragging them directly to the **Performance screen**. In this way, by dragging a single file we could listen immediately while for multiple songs a temporary Songlist will be created and then selecting the favorite song we could play it by pressing the enter key.

2) We can load a single song from File menu and then **Load File**

4) The last way to perform our songs is to use the **Database**. This mode has made the Winlive famous all over the world and is mainly used by musicians, singers and bands. With this mode it is possible to save the many options that Winlive offers (*see Database paragraph*);

MULTI IMPORT IN DATABASE

You can select the various songs to be imported into the **Database** (*see Database paragraph*);

LOAD FILE

It is possible to load a single song and play it immediately.

FOLDER

Here you can load an entire folder of songs and associate it with special songlists that can be recalled with the F11 and F12 keys. This function is very useful, for example, when we want to view the contents of a USB key without loading it into our database



<https://youtu.be/QoXKFH65T30?t=235>

LOAD LIST F10

By clicking on this item it is possible to load those lists created in the temporary lists and recalled with the F10 key. Remember that the temporary lists are emptied every time you exit the program.

SAVE LIST F10

Here you can save temporary lists.

IMPORT IN DATABASE

If a song is loaded temporarily it is possible with this function to import it into the Database.

IMPORT IN DATABASE ALL F10

With this function it is possible to import an entire temporary F10 songlist into the database.

STOP AT THE END OF EACH SONG (Performance)

This parameter sets the STOP at the end of the song even if a song has been booked

STOP OF THE SONG EVEN IF BOOKED

This parameter sets the STOP at the end of the song even if a song has been booked

RANDOM NEXT SONG (Performance)

It is possible to set a random execution of the songs of the current songlist

MLIVE ENCODING PRECEDENCE INSTEAD OF KARAOKE

Very often in a song there may be several lyrics, perhaps created with different programs. Enabling this function gives priority to the display of the MLIVE lyrics. MLIVE encoding is present in songservice songs

AUTOMATICALLY LOCK THE KEYBOARD

With this option the PC keyboard is locked. This function is very useful when you are away from the PC so as to avoid that someone touching the keyboard can compromise our performance

MINIMIZE

The WINLIVE program is minimized to display the PC desktop

CLOSE

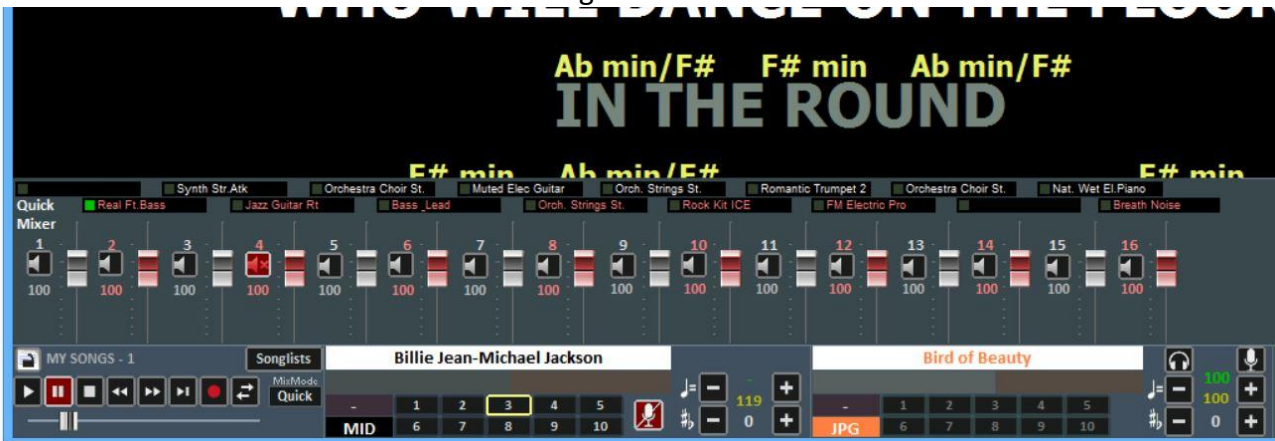
The program closes. In this case some parameters and the database are automatically saved

View mode

Through the menu **View Mode**, it is possible to choose the program's operating mode:

Performance [CTRL+ALT+P]: it is the playback mode used to control the various Song-List playlists on startup, as well as the disposal of the song booking, the control the performance, mixer and karaoke ([see paragraph](#));

Visual Mixer [CTRL+X]: displays a mixer horizontally with which we can control the various tracks of the midfiles or of the audio multitrack songs



Database [CTRL+ALT+D]: it the collection of songs, used to organize and catalogue them;

The database stores the path of songs, their parameters, their changes and the insertion of any images as background, texts or pdf combined to every song ([see paragraph](#));

Metrodrummer [CTRL+ALT+B]: electronic drum with more than 220 pre-set rhythms with the chance to sync with midfiles or like a real desk electronic drum ([see paragraph](#));

Winlive DJ Control [CTRL+ALT+J]: section with typical Djs mode with BPM recognition for Audio files, effects in real time and several tools available ([see paragraph](#));

YouTube Songs [CTRL+ALT+Y]: section where it is allowed to search for video files directly on YouTube and eventually include them on your SongList (comply with the terms of use of YouTube). This mode requires an internet connection ([see paragraph](#));

YouTube SongList [CTRL+ALT+L]: is a weekly uploaded section of links to YouTube tracks. An internet connection is required, as well as the acceptance of YouTube conditions ([see paragraph](#));

KARAOKE MONITOR

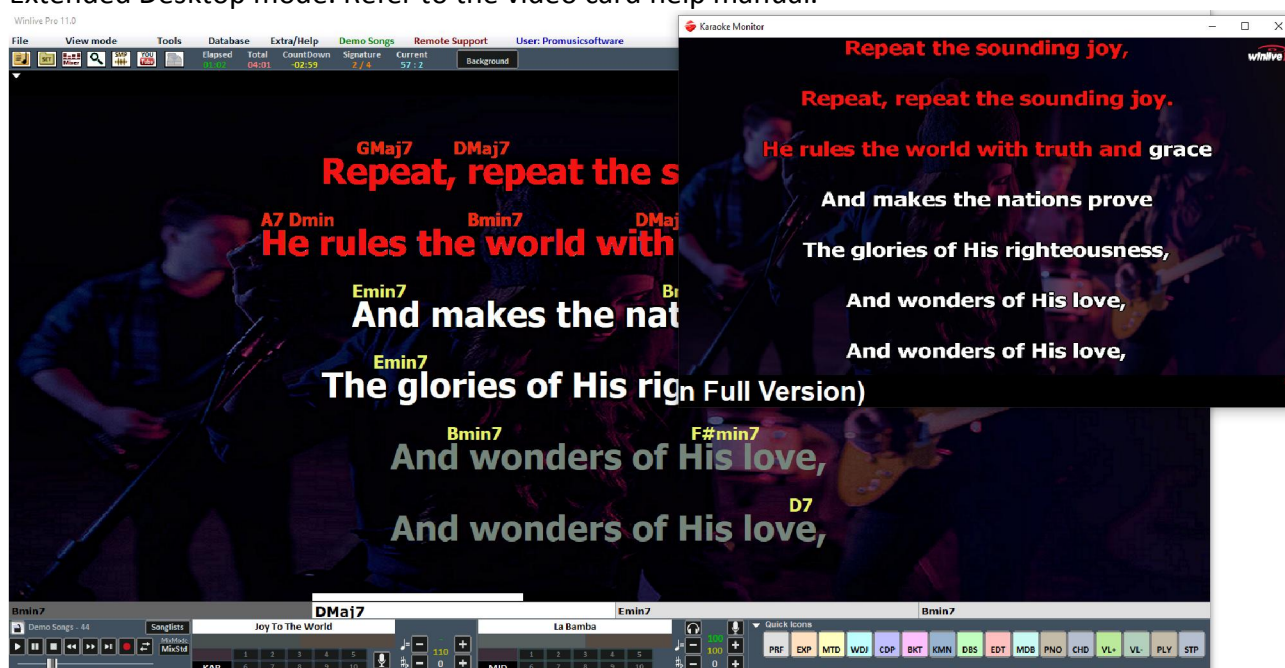
You can activate the second monitor (karaoke monitor) by clicking on the menu "View" -> "Karaoke Monitor" or [CTRL+K] from the keyboard.

A second Winlive window will open, which you can drag on the second monitor; double clicking on it will be set to full screen.


By right clicking on the main monitor screen you can change the character and mode of the Karaoke Monitor, you can choose between:

- Multiline scrolling karaoke (only Microsoft Windows);
- Winlive Classic: 2 lines;
- Modern Style: 4 lines;
- Music Stand: 4 lines + 1;
- Karaoke Zoom mode
- No Karaoke

Note: to make this function work correctly, from Windows imports, select the second monitor in Extended Desktop mode. Refer to the video card help manual.



SAMPLE PLAYER

By pressing the button  you can access the Sample Player or by pressing the [S] key



With this function, it is possible to reproduce quickly, even during the execution of a song, sound effects, images, pdf, texts or Audio Loops.

It is possible to have 10 Banks of 10 Samples each, for a total of 100 samples.

To upload the samples, click on the box next to each sample (when no sample is loaded, "No file Loaded" appears) and choose the file from the dialog.

For each sample, you can adjust the volume. You can play the samples in Polyphony, or, by checking the **Mono** option, play them in Monophony (i.e. if one sample is running, and another is recalled, the running sample is terminated).

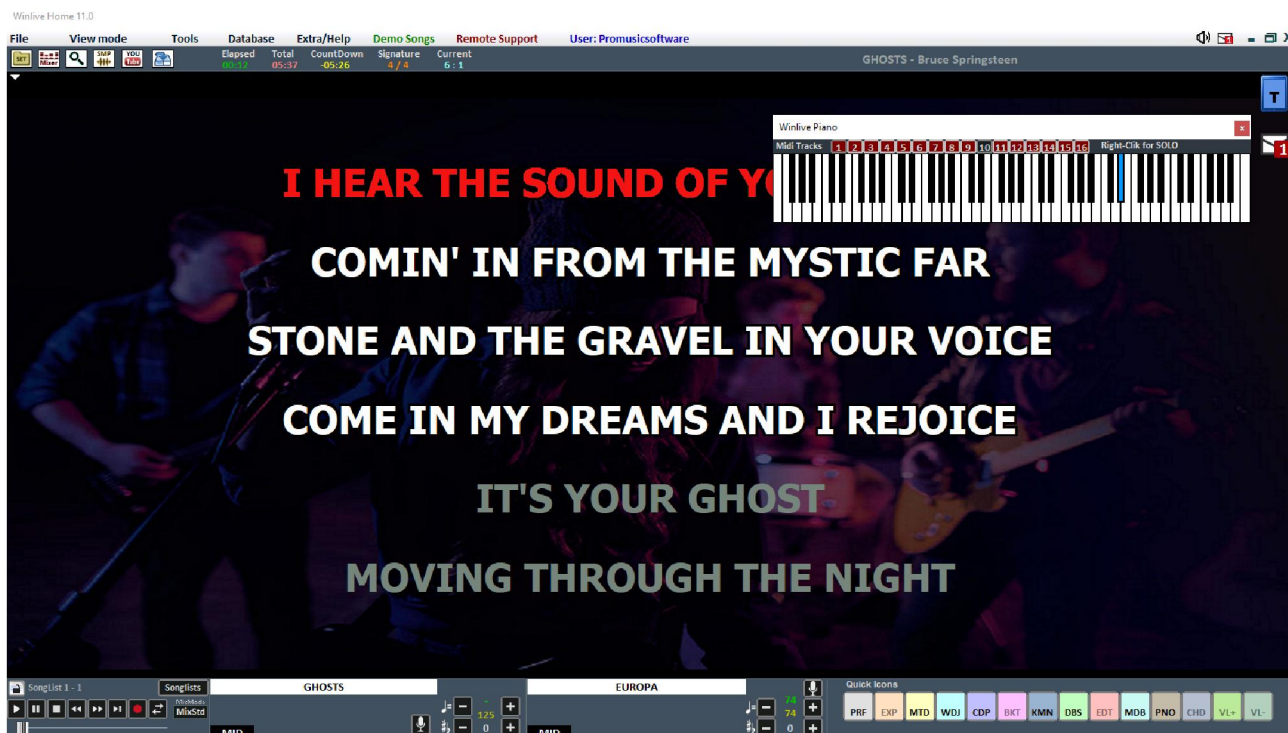
The **Comp** option allows, if checked, to activate a general compressor on the samples, that automatically uniforms their volume.

During the Performance, it is possible to access the sampler just pressing the [S] key, and then pressing keys [1] to [0] on the keyboard. To stop the reproduction of the samples in a forced way, press the [\] key.

It is possible to download additional audio samples by clicking on Download Samples

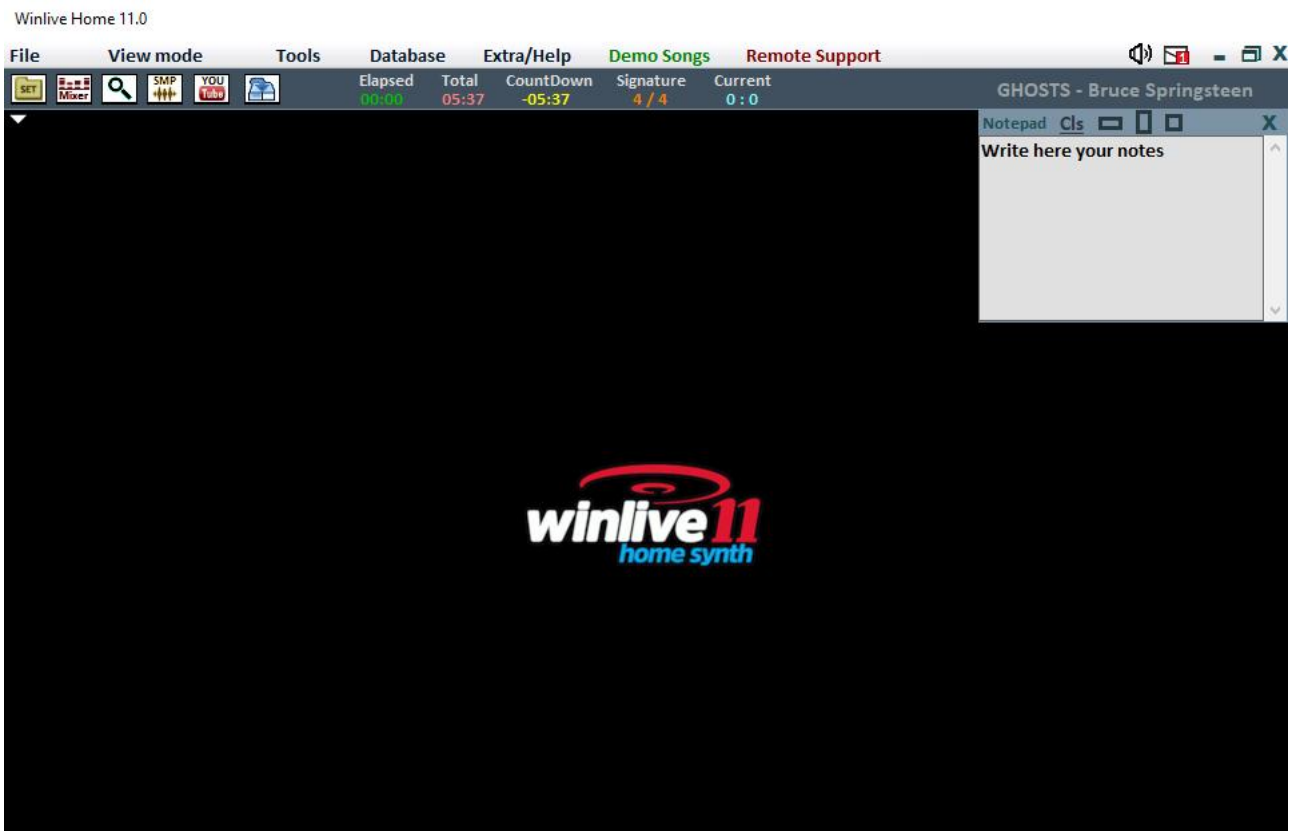
Piano Key [CTRL+H]

By clicking on this function, a piano keyboard is shown on the screen where the notes corresponding to the midi track will be displayed.



NOTEPAD WINDOWS

It allows you to view a small Notepad in various formats where you can write notes during your performances. By clicking on CLS you can delete the entire contents of the Notepad.



It is selected by View Mode → Notepad Windows [CTRL+N]

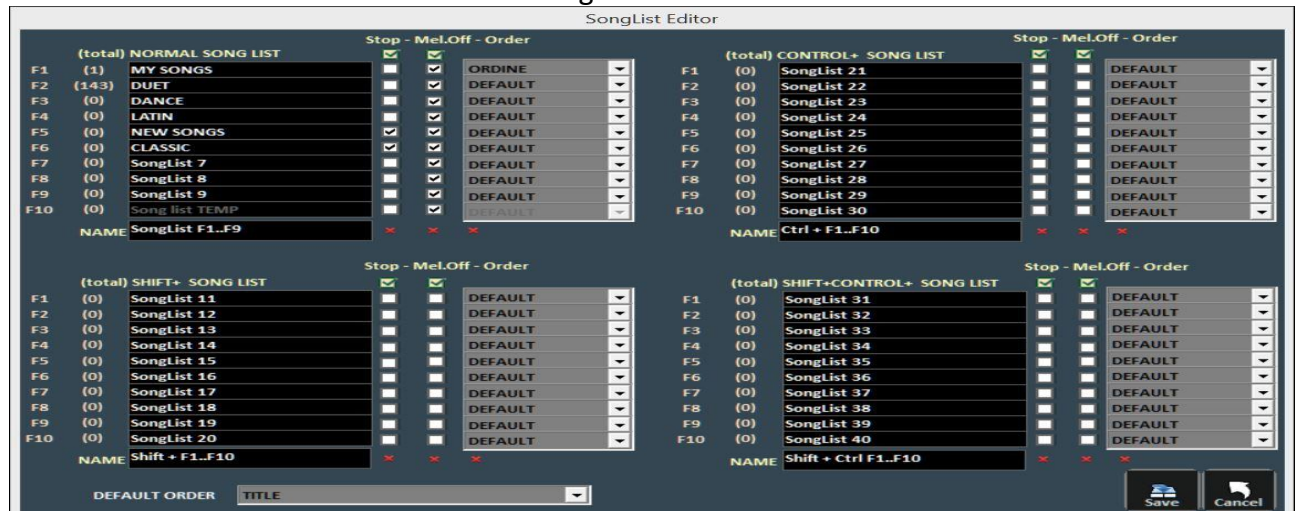
Tools

OPTIONS

In this function and in the submenus you can customize the program according to your needs. We remind you that WINLIVE, leader in its category for more than 27 years, has collected the requests and listened to the needs of thousands of musicians and singers all over the world so as to be able to adapt the program in a personalized way. [\(see paragraph\)](#)

SONGLIST EDITOR

You can access the SongList Editor by the Tools menu → Editor → Song list editor or by clicking on the bottom left next to the name of the SongList.



In order from the left we will find:

- the corresponding key to recall the Songlist;
- the number of songs in each Songlist:
- the name of the Songlists
- by ticking the STOP box, the set list will stop playing, while not ticking it allows continuous play;
- by ticking the MELODY box, each song in the list will be played without the melodic guide (midifile);
- the ORDER function provides a drop-down menu from which you can select the order mode in which songs will be played (if we indicate TITLE, for example, we will have an alphabetical order, rather than by ID, by interpreter, by author and so on).

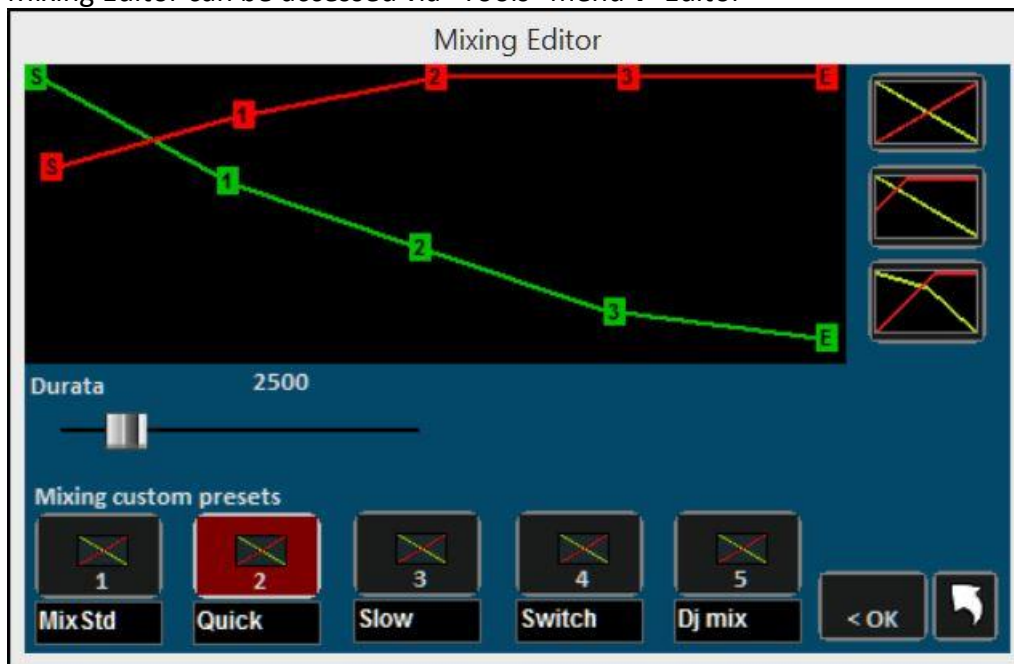
DEFAULT ORDER: here we can select a general order as long as there is no specific order in the SongList.



<https://youtu.be/y5E5pEAKWag>

EDITOR->MIXING EDITOR

Mixing Editor can be accessed via "Tools" menu→ Editor

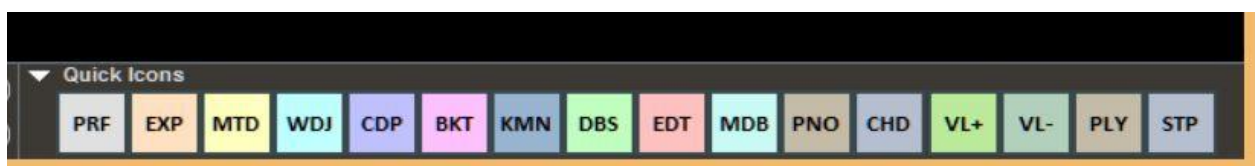


With the mixing editor, you can set the progress and duration (in milliseconds) of the Cross-Fade, i.e. the mixing of two songs. We remind you that mixing between 2 midifiles is not possible. In this case we will pass from the first to the second song, by fade out and not mixing

The green line indicates the ending song, while the red line indicates the song that will be merged together with the first one.

By default, Winlive will adopt a linear type behaviour, with a progressive and constant lowering of the volume of the song to fade, simultaneously with a progressive and constant increase of the volume of the following one. You can select five pre-set curves, or draw a custom curve.

EDITOR->QUICK ICONS



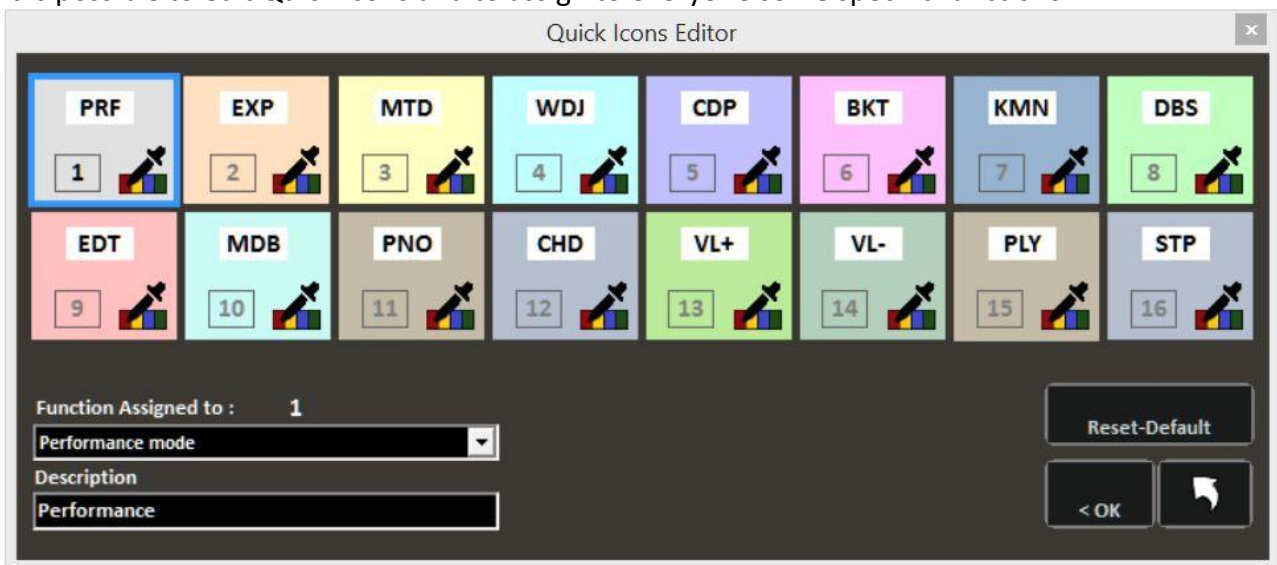
In the right part of the bar you can see several coloured buttons which allow the quick access to several functions and modes::

(We remind that these quick buttons may not be viewed if the resolution of the monitor isn't right as for notebook with little monitors)

- PRF: Quick button to come back to Performance mode
- MDR: Quick button to enter in Metrodrummer (Virtual Drum Machine)
- WDJ: Quick button for the access to Winlive DJ Control
- CDP: Quick button for the access to CD Player
- KMN: Access to Karaoke Monitor
- DBS: Access to Database

- PNO: Opening Piano Key Board

It is possible to edit Quick Icons and to assign to everyone some specific functions



UTILITY -> FILE TRANSFER

By clicking on this item we can transfer all the data present from the c: \ Program Files folder to the Documents folder thus obtaining unrestricted access.

UTILITY -> OPEN FOLDER WINLIVE DOCUMENTS

This utility will allow us to locate and directly open the Documents folder where Winlive files will be present.

UTILITY -> OPEN VIRTUAL FOLDERS AND STORE

Windows creates hidden folders where Winlive in previous versions stored important files such as the database. To access these particular folders directly click on this function..

UTILITY -> START WINLIVE CD PLAYER / EXTRACT



With this function, it is possible to extract tracks from Audio CDs and save them in Wav or Mp3 format.

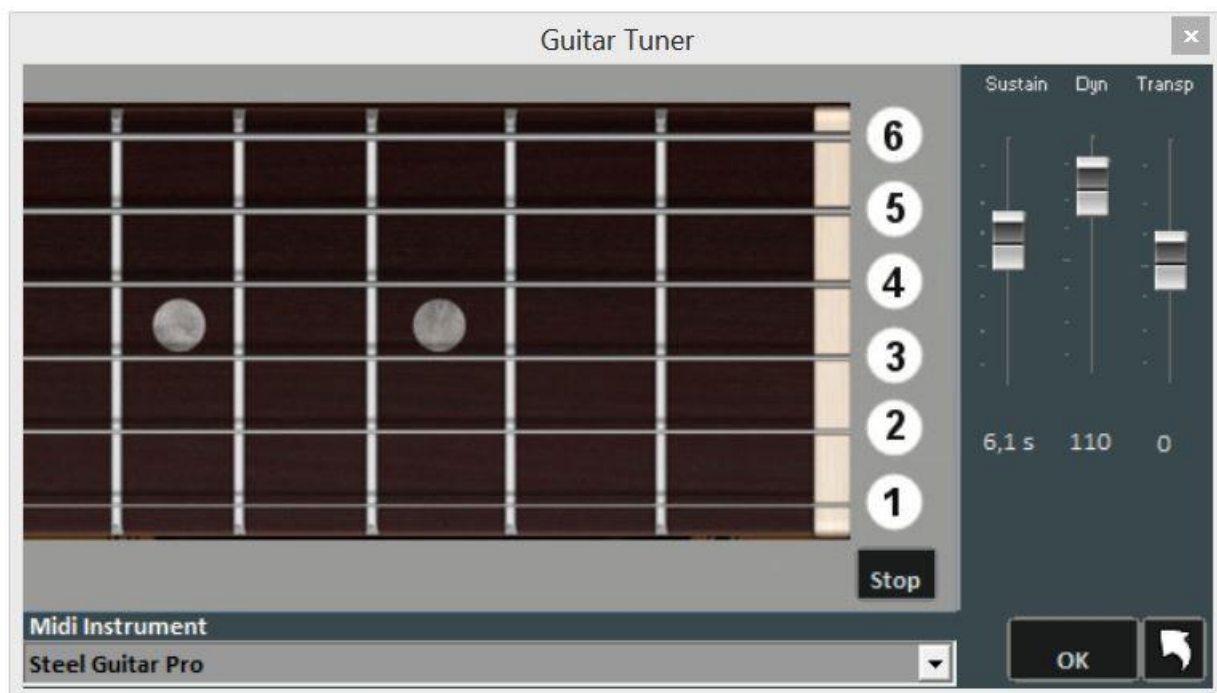
It is necessary to select them (you can select them all through the "All" button or select them manually by clicking on the first column), then click on the Convert button.

You can choose between uncompressed Wav (Wave not compressed) and Mp3, varying the quality according to your needs (eg "Minimal Only for voice store" generates a low quality file with the smallest footprint on disk, while "Maximum quality" generates a high quality file, but also with the largest disk size).

The peculiarity of this CD player is that it has the advanced features of commercial DJ CD players, that is, it allows you to change the tempo and intonation (Key) in real-time.

UTILITY-> GUITAR TUNER

The guitar tuner could not be missing to make happy guitarists and other musicians.



We can choose the tuner sound, the length of the sound (sustain), the dynamics (Dyn) and the Transpose.

GUIDE

The manuals and audio and video media for the program are displayed

SUPPORT

The current version of the program is displayed. The personal account, serial number and related license. It is also possible to log into your account on the Promusicsoftware website.

REPAIR / INSTALL VIDEO CODEC

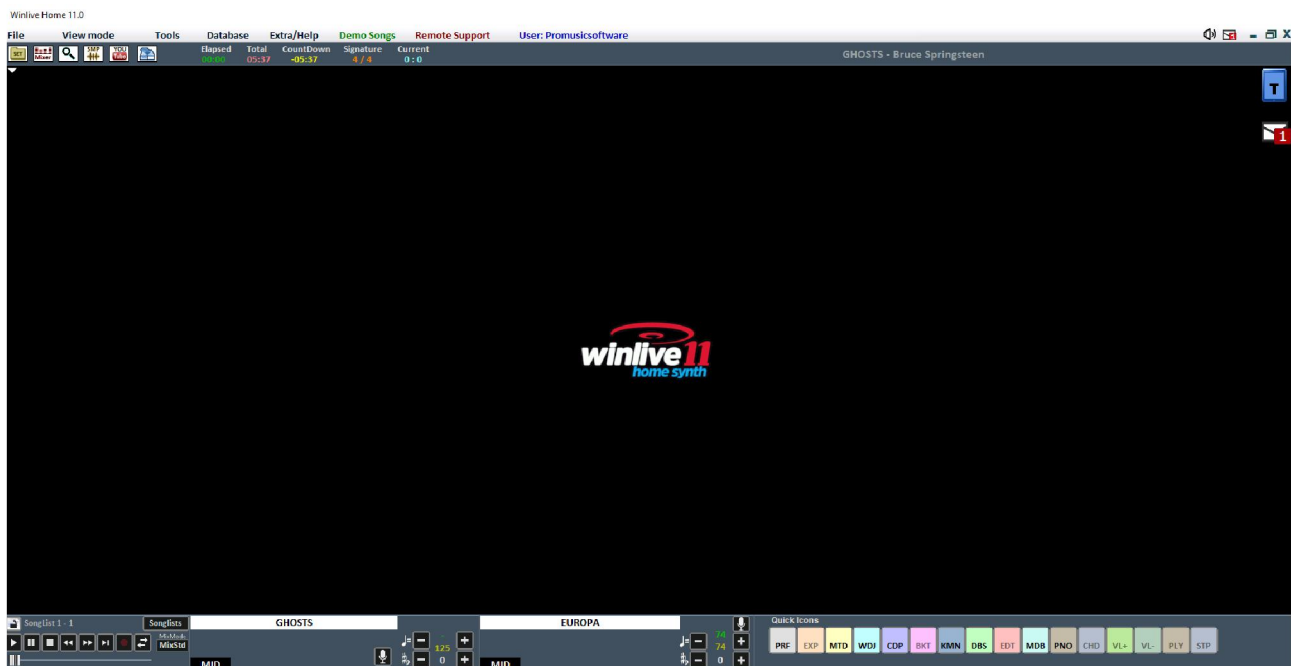
It can rarely happen that, especially due to Windows updates, video files are not played properly (no sound or no video). This feature allows us to restore everything. For example, if we launch a video and we do not hear the audio, we can click on the following function then OPEN FOLDER and finally launch the K-Lite_Codec_Pack_1205_Basic file. Continue until you install the codec package. At the end of the installation we will hear the missing audio

UPDATES

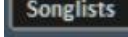
This function will allow us to verify that there are new updates to the program, free or paid


Performance mode

Below is the "Performance" screen of WINLIVE HOME SYNTH 11



The SongList

The SongList is the "heart of the program" accessible through function Keys or . The name of the song will be showed in the grid (as set in the database) as well as the typology, so the file format, indicated by a specific colour.

The songs with lyrics are distinguished by the icon .

The cursor buttons (the 4 arrows) of the keyboard can be used to select the files.

There are a total of 39 SongLists (or playlists) that can be called with buttons:

- **For Windows**
 - **from F1 to F9** (from playlist 1 to 9)
 - **Shift + [from F1 to F10]** (from playlist 11 to 20)
 - **Ctrl + [from F1 to F10]** (from playlist 21 to 30)
 - **Shift + Ctrl + [from F1 to F10]** (from playlist 31 to 40)
- **For Mac**
 - **Push the button "?" and type the playlist number** (from playlist 1 to 40)


In addition, it is possible to set special SongLists:

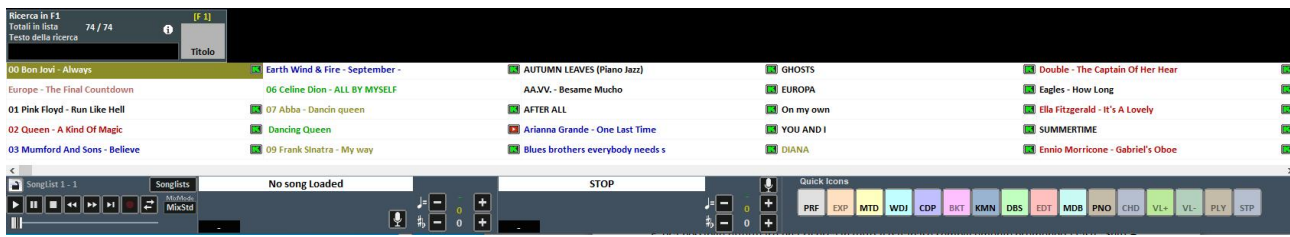
- **F10** (temporary SongList) it is possible to add songs from other SongLists by pressing the button 'INS' or clicking the right mouse button then 'add to F10'

- **F11, F12** (song folder list) it is possible to add all files of a folder to one of the two lists, to set a

folder push from keyboard '\ ' or 

The combination of buttons **Shift + F11** or **Shift + F12** of the keyboard allows you to view the whole database in a single SongList

The button **BACKSPACE** or  opens the research bar (picture below)



The research can be done on the single SongList or on everyone else (putting the check on "All The SongLists")

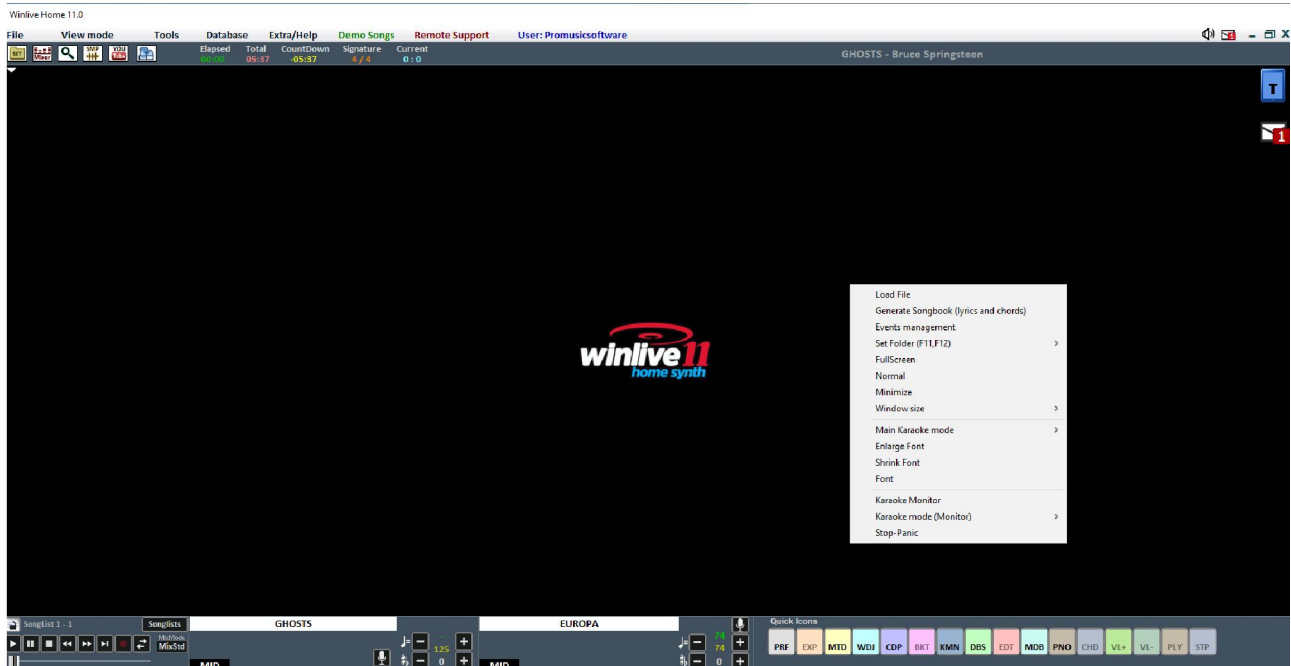
It is possible to scroll the results through the button "**TAB**" of the keyboard, for example a research of "HELLO" will give you results such as "HELLO DOLLY", "I SAY HELLO", and so on.

If the author and the artist are set in the database, we can filter the playlist viewing only the results related to certain authors or artists. To view the playlist another time, you just need to click on "ALL". It is now possible to do a research in the whole database simply pushing buttons "Shift + F11" or "Shift + F12" from keyboard, which allows you to view all the results.

From drop-down menu, we can select the typology of file to search for (midi, audio, video).

Furthermore, it is possible to view and filter the songs according to certain features: for example, if we type the word "WAY" then pressing the button "**TITLE**", you could see only the songs that contain the word "WAY".

POPUP MENU



Clicking on right button of the mouse, on the main screen of Winlive it is possible to open a Popup Menu, from which you can have access to different functionalities:

- **Load File:** read files quickly without inserting them in the database;
- **Events management:** Enable the Events Window feature to associate events with midi and audio files. This function generates an associated file with the extension * .wen
- **Set Folder:** quick access to SongFolder List (F11 and F12);
- **Fullscreen:** full screen view of the main screen;
- **Normal:** restore the view with menu and control bar;
- **Minimize:** the picture of Performane is closed as icon;
- **Window size:** allows to reduce the window dimensions;
- **Karaoke mode:** allows to choose the different modes: Multiline scrolling karaoke, Classic (2 lines), Modern Style (4 lines), Music stand Mode, Music stand with chords, Music stand 6 lines, 2 lines at the top (musician style) or no karaoke;
- **Enlarge Font:** allows to enlarge the font dimension;
- **Reduce Font :** allows to reduce the font dimension;
- **Font:** allows to change font type, style and dimensions;
- **Use background image:** displays or removes the background image;
- **Monitor Background:** allows you to load an image as background
- **Karaoke Monitor:** allows to enable the second screen (see dedicated section);
- **Karaoke Monitor mode:** allows to choose the view mode of the monitor and the dimension
- **Lock keyboard (CTRL+S):** choosing this function the buttons are disabled; pushing a function button the keyboard restarts working;
- **Stop-Panic:** stops the playback of the files and re-initialises any expander;
- **Import into database:** import a song directly into the database.
- **YouTube start:** set a starting point of the song connected to YouTube

CONTROL BAR



The CONTROL BAR is divided into 4 parts, the left part (transport bar) is reserved to control buttons of the song, the second part is related to the song which is playing at the moment (Main Song), the third part to the song which has been booked (next song).


The fourth part is composed of a series of buttons, quick to access to different functions and mode QUICK ICONS (these quick buttons may not be viewed if the monitor resolution doesn't allow it: for example netbook or notebook with low resolution screen)

Through the buttons placed in the bar below it is possible to control:


Melody channel (on or off) for the midis;

The tempo in BPM compared to the original tempo for midifiles;

The key change for midi, audio and video files.

Once the time and the custom tone are set (also for volume and other parameters which can be checked from Mixer- see dedicated section), it is possible to save these parameters virtually in the database, pushing the button  placed up. So, every time you will launch the edit file, this will be performed with all the made changes and the modified parameters will be conserved also after quitting the program.

MIXER

To select the midi channels or manage the audio it is necessary to open the mixer (key 'X') or click on .

The Mixer window located on the left side of the "Performance" screen allows you to keep under control various parameters both midi and audio.



Click on an item to open a drop-down menu and make a choice, including enabling / disabling the track, soloing it or activating them all. It is also possible to go into the detail of the track, apply an MFX effect, select Drum Editing and User Sound Editing (see detail).

In **red** the muted channels in **white** the active ones.

You can enable / disable a metronome by clicking on the corresponding button.

The Comp key activates and deactivates the compression of the dynamics of midi files.

Through the Device column it is possible to select a different Midi output for each individual channel. You can apply these Device settings for all songs by clicking on the Lock button.

Through the Remix Style it is possible to change the style of the song, choosing between the various styles and being able to apply 2 types of variation and the use of percussion, the intro and the end of the style. This is obviously valid only for midi file;;

In the Audio section we find the Volume Fader to adjust the level of the output audio, the three faders for equalizing the sound; Gain adjusts the gain of the audio backing track; the V.Att fader regulates the attenuation of the voice. The Master Track Effects faders (A - B) adjust the volume of the effects selected in the drop-down menu in the corresponding box;

Pan and right and left channel management for MPX files


Virtual save allows you to store the change in the database.

In the mixer section we also find the management of MPX files. In this mode you can manage and save the left or right channel of the audio file.



VIRTUAL KEYBOARD



Enabled by pressing the button  at the top right of the video in Performance mode, Virtual Keyboard allows you to activate this screen as shown in the photo below:



It allows you to use the basic commands if we use WINLIVE on TABLET WINDOWS or touch screen. The F1 / F9, Shift F1 / F10, Ctrl F1 / F10, Shift + Ctrl F1 / F10 keys are used to select the SongLists; Esc closes the list; the left and right arrows scroll the list in the commanded direction; the + F10 and - F10 keys remove or add songs in the provisional list F10; Start, allows you to start playing the selected song; Mix, allows mixing between one song and the next; the X button closes this screen.

AUDIO TRACK RECORDING

This function allows you to record an audio track on a song included in the database



Start a song and press the record key:



From the panel you can select the Audio device, Line and input Volume that has a signal adjustment fader. The Filename indicates the saving path of the recorded track, but it is possible to change it by typing the appropriate key.

WAV Format indicates the standard format for saving the track, but this can also be changed.

By clicking on "Start Test" you can perform a recording test by checking the incoming volume level.

At the end of the test, the button "Stop test" allows you to return to the initial condition.

The "Start record" and "Stop" buttons are used respectively to start and end recording tracks.

The recorded track will be associated with the song in database in the MEDIA column and in performance a "2nd track" window will appear next to the song title with a small vertical cursor that represents the volume of the recorded track.

Note: at the moment this function is not enabled on Mac OSx

Database

Below is the "Database" grid of Winlive Home

ID	Songlist	Title	Author	Genre	Notes	File	Type	Karaoke	Tempo	Chord	TempoP	Transpose	Volume	Media	Textline	Cost
1	1-Songlist 1	00 Bon Jovi - Always				C:\Users\FM\Desktop\AMY SONGS\00 Bon Jovi - Always	MP3						100			1
2	1-Songlist 1	Europe - The Final Countdown				C:\Users\FM\Desktop\AMY SONGS\02 Europe - The Final Countdown	MP3		119		119		100			2
3	1-Songlist 1	01 Prince & New Power Generation - The Love Thing Album				C:\Users\FM\Desktop\AMY SONGS\03 Prince & New Power Generation - The Love Thing Album	MP3						100			3
4	1-Songlist 1	02 Queen - A Kind of Magic				C:\Users\FM\Desktop\AMY SONGS\02 Queen - A Kind of Magic	MP3						100			4
5	1-Songlist 1	03 Mumford and Sons - Babel				C:\Users\FM\Desktop\AMY SONGS\03 Mumford and Sons - Babel	MP3						100			5
6	1-Songlist 1	04 Prince & New Power Generation - The Love Thing Album				C:\Users\FM\Desktop\AMY SONGS\04 Prince & New Power Generation - The Love Thing Album	MP3						100			6
7	1-Songlist 1	05 Prince & New Power Generation - The Love Thing Album				C:\Users\FM\Desktop\AMY SONGS\05 Prince & New Power Generation - The Love Thing Album	MP3						100			7
8	1-Songlist 1	07 Abba - Dancing Queen				C:\Users\FM\Desktop\AMY SONGS\07 Abba - Dancing Queen	MP3						100			8
9	1-Songlist 1	08 Prince & New Power Generation - The Love Thing Album				C:\Users\FM\Desktop\AMY SONGS\08 Prince & New Power Generation - The Love Thing Album	MP3						100			9
10	1-Songlist 1	09 Frank Sinatra - My Way				C:\Users\FM\Desktop\AMY SONGS\09 Frank Sinatra - My Way	MP3						100			10
11	1-Songlist 1	10 Prince & New Power Generation - The Love Thing Album				C:\Users\FM\Desktop\AMY SONGS\10 Prince & New Power Generation - The Love Thing Album	MP3						100			11
12	1-Songlist 1	11 Prince & New Power Generation - The Love Thing Album				C:\Users\FM\Desktop\AMY SONGS\11 Prince & New Power Generation - The Love Thing Album	MP3						100			12
13	1-Songlist 1	12 Prince & New Power Generation - The Love Thing Album				C:\Users\FM\Desktop\AMY SONGS\12 Prince & New Power Generation - The Love Thing Album	MP3						100			13
14	1-Songlist 1	13 Prince & New Power Generation - The Love Thing Album				C:\Users\FM\Desktop\AMY SONGS\13 Prince & New Power Generation - The Love Thing Album	MP3						100			14
15	1-Songlist 1	14 Prince & New Power Generation - The Love Thing Album				C:\Users\FM\Desktop\AMY SONGS\14 Prince & New Power Generation - The Love Thing Album	MP3						100			15
16	1-Songlist 1	15 Prince & New Power Generation - The Love Thing Album				C:\Users\FM\Desktop\AMY SONGS\15 Prince & New Power Generation - The Love Thing Album	MP3						100			16
17	1-Songlist 1	16 Prince & New Power Generation - The Love Thing Album				C:\Users\FM\Desktop\AMY SONGS\16 Prince & New Power Generation - The Love Thing Album	MP3						100			17
18	1-Songlist 1	17 Prince & New Power Generation - The Love Thing Album				C:\Users\FM\Desktop\AMY SONGS\17 Prince & New Power Generation - The Love Thing Album	MP3						100			18
19	1-Songlist 1	18 Prince & New Power Generation - The Love Thing Album				C:\Users\FM\Desktop\AMY SONGS\18 Prince & New Power Generation - The Love Thing Album	MP3						100			19
20	1-Songlist 1	19 Prince & New Power Generation - The Love Thing Album				C:\Users\FM\Desktop\AMY SONGS\19 Prince & New Power Generation - The Love Thing Album	MP3						100			20
21	1-Songlist 1	20 Prince & New Power Generation - The Love Thing Album				C:\Users\FM\Desktop\AMY SONGS\20 Prince & New Power Generation - The Love Thing Album	MP3						100			21
22	1-Songlist 1	21 Prince & New Power Generation - The Love Thing Album				C:\Users\FM\Desktop\AMY SONGS\21 Prince & New Power Generation - The Love Thing Album	MP3						100			22
23	1-Songlist 1	22 Prince & New Power Generation - The Love Thing Album				C:\Users\FM\Desktop\AMY SONGS\22 Prince & New Power Generation - The Love Thing Album	MP3						100			23
24	1-Songlist 1	23 Prince & New Power Generation - The Love Thing Album				C:\Users\FM\Desktop\AMY SONGS\23 Prince & New Power Generation - The Love Thing Album	MP3						100			24
25	1-Songlist 1	24 Prince & New Power Generation - The Love Thing Album				C:\Users\FM\Desktop\AMY SONGS\24 Prince & New Power Generation - The Love Thing Album	MP3						100			25
26	1-Songlist 1	25 Prince & New Power Generation - The Love Thing Album				C:\Users\FM\Desktop\AMY SONGS\25 Prince & New Power Generation - The Love Thing Album	MP3						100			26
27	1-Songlist 1	26 Prince & New Power Generation - The Love Thing Album				C:\Users\FM\Desktop\AMY SONGS\26 Prince & New Power Generation - The Love Thing Album	MP3						100			27
28	1-Songlist 1	27 Prince & New Power Generation - The Love Thing Album				C:\Users\FM\Desktop\AMY SONGS\27 Prince & New Power Generation - The Love Thing Album	MP3						100			28
29	1-Songlist 1	28 Prince & New Power Generation - The Love Thing Album				C:\Users\FM\Desktop\AMY SONGS\28 Prince & New Power Generation - The Love Thing Album	MP3						100			29
30	1-Songlist 1	29 Prince & New Power Generation - The Love Thing Album				C:\Users\FM\Desktop\AMY SONGS\29 Prince & New Power Generation - The Love Thing Album	MP3						100			30
31	1-Songlist 1	30 Prince & New Power Generation - The Love Thing Album				C:\Users\FM\Desktop\AMY SONGS\30 Prince & New Power Generation - The Love Thing Album	MP3						100			31
32	1-Songlist 1	31 Prince & New Power Generation - The Love Thing Album				C:\Users\FM\Desktop\AMY SONGS\31 Prince & New Power Generation - The Love Thing Album	MP3						100			32
33	1-Songlist 1	32 Prince & New Power Generation - The Love Thing Album				C:\Users\FM\Desktop\AMY SONGS\32 Prince & New Power Generation - The Love Thing Album	MP3						100			33
34	1-Songlist 1	33 Prince & New Power Generation - The Love Thing Album				C:\Users\FM\Desktop\AMY SONGS\33 Prince & New Power Generation - The Love Thing Album	MP3						100			34
35	1-Songlist 1	34 Prince & New Power Generation - The Love Thing Album				C:\Users\FM\Desktop\AMY SONGS\34 Prince & New Power Generation - The Love Thing Album	MP3						100			35
36	1-Songlist 1	35 Prince & New Power Generation - The Love Thing Album				C:\Users\FM\Desktop\AMY SONGS\35 Prince & New Power Generation - The Love Thing Album	MP3						100			36
37	1-Songlist 1	36 Prince & New Power Generation - The Love Thing Album				C:\Users\FM\Desktop\AMY SONGS\36 Prince & New Power Generation - The Love Thing Album	MP3						100			37
38	1-Songlist 1	37 Prince & New Power Generation - The Love Thing Album				C:\Users\FM\Desktop\AMY SONGS\37 Prince & New Power Generation - The Love Thing Album	MP3						100			38
39	1-Songlist 1	38 Prince & New Power Generation - The Love Thing Album				C:\Users\FM\Desktop\AMY SONGS\38 Prince & New Power Generation - The Love Thing Album	MP3						100			39
40	1-Songlist 1	39 Prince & New Power Generation - The Love Thing Album				C:\Users\FM\Desktop\AMY SONGS\39 Prince & New Power Generation - The Love Thing Album	MP3						100			40
41	1-Songlist 1	40 Prince & New Power Generation - The Love Thing Album				C:\Users\FM\Desktop\AMY SONGS\40 Prince & New Power Generation - The Love Thing Album	MP3						100			41
42	1-Songlist 1	41 Prince & New Power Generation - The Love Thing Album				C:\Users\FM\Desktop\AMY SONGS\41 Prince & New Power Generation - The Love Thing Album	MP3						100			42
43	1-Songlist 1	42 Prince & New Power Generation - The Love Thing Album				C:\Users\FM\Desktop\AMY SONGS\42 Prince & New Power Generation - The Love Thing Album	MP3						100			43
44	1-Songlist 1	43 Prince & New Power Generation - The Love Thing Album				C:\Users\FM\Desktop\AMY SONGS\43 Prince & New Power Generation - The Love Thing Album	MP3						100			44
45	1-Songlist 1	44 Prince & New Power Generation - The Love Thing Album				C:\Users\FM\Desktop\AMY SONGS\44 Prince & New Power Generation - The Love Thing Album	MP3						100			45


- Create, Open and Save

From **Performance** it is possible to access the database by clicking on the menu at the top **Database -> Database** or from **View mode -> Database** or by clicking the quick button (quick icons) **DBS**

It can be accessed without using the mouse by pressing the **CTRL + ALT + D** keys
WINLIVE HOME 11 allows you to manage multiple databases.

- To create a new database press the button: 

Winlive will ask whether to save the already present database, after which it will empty the current database.

- To open an existing database press the button: 


Winlive will ask you to specify the name of the database to open.

- To save the current database with a name press: 

Winlive will ask you to specify the name of the database to save.

- To import a database created with versions 5.5 / 4.5 / 4.6 / 4.7 / 5.0 / 5.5 press: 

Winlive will ask you to specify the name of the database to be imported.

- To make a backup of the database press: 

- To restore the previously created backup press the button: 

Winlive will show the backup date and time.

Warning: creating a new database, or restoring a backup, will delete the one previously created if you do not save it.

- Edit the cells

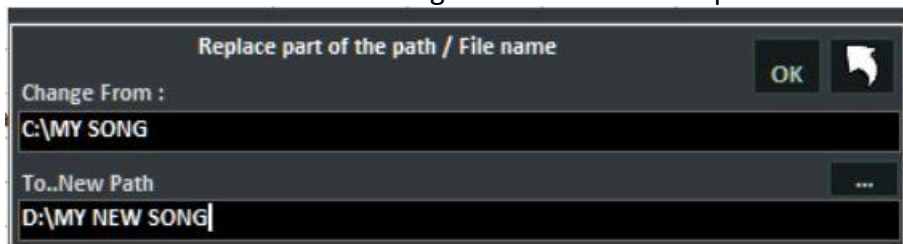
You can change the cells values by double clicking on each cell if you are in "Selection" mode or by pressing the "E" key. You just need a single click when in "Edit" mode.

On some fields the entry process will be guided, on others it is possible to write directly inside, other fields are informative and it will not be possible to edit them, for example Type field, ID...

It is possible to edit some values quickly through the "Preview" window that allows you to listen quickly to a preview with new settings applied.

Right clicking on a cell (or on a selection of cells) allows you to access a menu through which you can perform various operations:

- Select all: highlight all songs
- Reset selection: cancels the selection of the tracks
- Copy: copy
- Edit: edit the selected cell
- Multi field insertion: allows a multiple selection on several songs at the same time.
- Sort A-Z: sort in ascending order in the selected column
- Sort Z-A: sort in descending order in the selected column
- Delete database: delete the song from the database but not physically from the hard disk
- Sort grouped by SongList: sorting in ascending order according to the SongList
- Get interpreter / author from folder name: the folder name is displayed in the Artist column.
- Move to List: move the selected songs from one SongList to another
- Copy to List: copy the selected songs to a SongList
- Restore files-Path (scanning): this important function allows you to restore the path if the files have been physically moved from one folder to another. It is also possible to restore the path for the files of the MEDIA and TEXTFILES columns
- Replace part of the path: replaces a complete route or part of it with a different one. For example if I physically moved some songs from the folder C: \ SONGS in D: \ MY SONGS I have to select the interested songs and write as in the picture



- Mute channels: to select the channels to be muted
- Copy IN: physically copies the songs from one folder to another with the possibility of updating the paths in the database
- Move IN: physically move the songs from one folder to another with the possibility of updating the paths in the database

- Multi-selection

If you hold down the CTRL key, you can select multiple songs in order to operate in groups.

If you are in "Selection" mode, the song is deselected by clicking on it, while in "Edit" mode just click on any field to deselect everything.

- Database columns

Below is the sequence the columns of the database

ID: indicates the number in chronological progression of the imported songs

SongList: the belonging SongList is displayed

Title: indicates the title of the song

Artist: performer of the piece (artist)

Author: author of the piece.

Genre_Notes: we can enter the genre of the song or annotations on the song itself

Type: value not editable. Indicates the type of file (mid, mp3, video, etc.)

Karaoke: value not editable. Indicates the presence of the text within the file. It is valid only for midi files and mp3s

Tempo: value not editable. It is the time relative to the song

TempoP: it is the edited time

ChOff: indicates muted channels for midifiles

Transpose: displays the changed pitch

Volume: the standard volume of the song (100 means volume as in the original)

Media: file associated with the song (for example associating a pdf, an image, a sound, etc.)

Textfile: Text associated with the song (txt or rtf)

Order: allows you to create a custom order of the songs in the set list

When we want to create a custom order, we have to insert a series of numbers in order to create a numerical criterion

For example if we want to create a playlist with this personalized sequence

IMAGINE - YESTERDAY - MICHELLE - LET IT BE

We will insert these numbers for example: IMAGINE (15) - YESTERDAY (21) - MICHELLE (50) - LET IT BE (88). No matter what numbers we enter, the important thing is to create an increasing number sequence

After doing this, remember to assign this sorting order to this SongList in SONGLIST EDITOR



<https://youtu.be/y5E5pEAKWag>

Key: indicates the key of the song

-Import of the songs

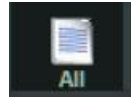
Start entering some songs by clicking on the left side of the database called **Explorer**.

Select a folder and open it with a double click. The songs contained in the folder in question will appear. If the folder is located on the desktop or in Docs folder, we can view them simply by



clicking the buttons

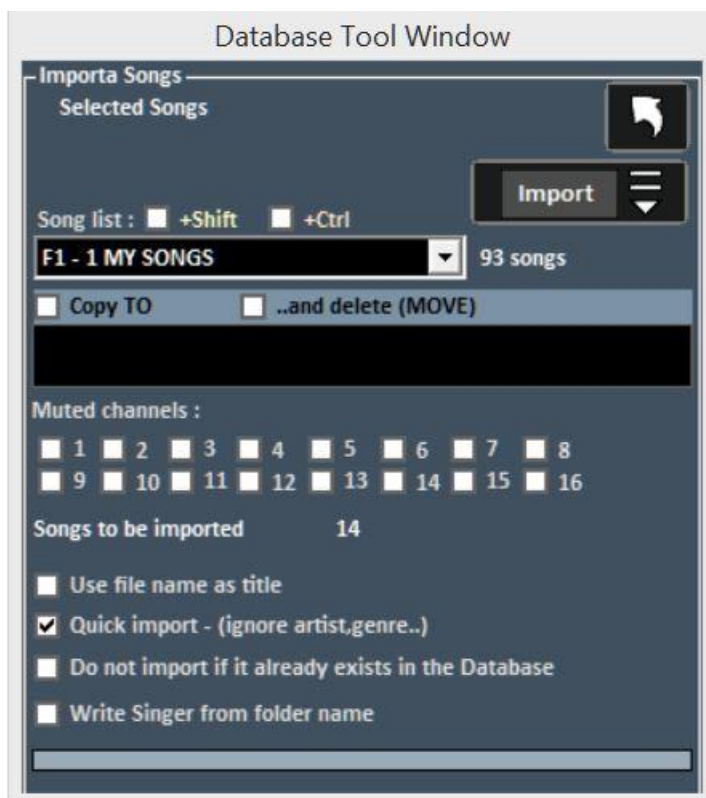
We can select a song, several songs (by holding down the CTRL key) or all the songs in the folder



by pressing the button



By clicking on , the selected files are imported.



Now you can select:

- The destination **SongList**;
- **Copy TO**: a secondary folder where to save the copies of the imported files;
- **MOVE**: the selected files are physically moved to another folder
- The **mute** channels for Midi files;
- **Use file name as title**: displays the name of the file as the title of the song (Title column) instead of the title that is usually included in the file itself;
- **Quick import**: speeds up the import by ignoring some information;
- **Do not import if it already exists in the database**: avoid uploading files down in the database;
- **Write Interpreter as folder name**: write the artist of the piece (Artist column) by taking information from the last folder that contained the above mentioned song.

Note: fast import performs the process extremely quickly but does not allow thorough checks on the integrity of the file and the MP3 tags.

In any case, files that are deemed invalid, such as Midi that have notes jammed or lacking vital information will not be imported in order not to compromise any user performance.

In any case, at the end of the import a short report will appear about the imported and invalid files.

Attention: the integrity checks will not be provided on the files of the Song Folder Lists and on the files launched with Load File



Set filters on the display based on the type of File and / or the SongList to which it belongs



In the order:

- Return to Performance mode
- Import songs
- Delete current song
- Delete all the songs now shown in the grid even if not selected
- Use file name as title for the selected song
- Search for a title among the songs on the grid
- Missing files
- Import the Playlists of Vanbasco

Bottom row:

- Copy the file to another physical destination
- Search for "orphan" files (files missing or with wrong path)
- Open the SongList Manager (SongList editor)
- Replaces the path or file name
- Create a database report in HTML format
- Create a database report in Excel format
- Locate the file on the hard disk
- Title optimization

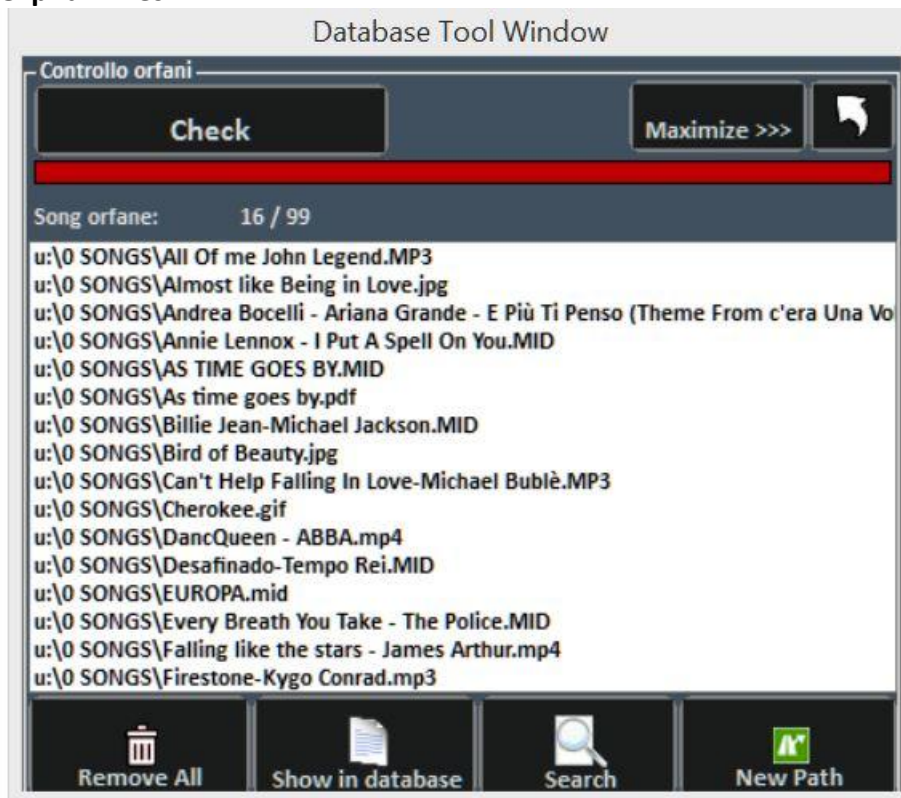
- ORPHAN FILES (missing files)

To search for orphan files, click on the button



Tip: positioning an icon on a small label will give a brief description

Orphan Files



The Orphan File Search feature allows you to scan the entire database looking for files that are missing in a way that may have been deleted or moved to another folder.

To find orphan files, press the "Check" button. Once the scan is complete, you can delete matches from the database (**Remove All**), or show them in the database. The Search function searches for all orphan files and once identified, the relative path in the database is automatically updated.

With New path, on the other hand, the new path is updated manually.

YOUTUBE VIDEO SONGS

WARNING: please accept the conditions of YOUTUBE before using this service

We remind you that the YOUTUBE service is granted until the next version of WINLIVE is released. It will be renewed only when upgrading your Winlive version once delivered.

This function is accessible through the YouTube button located on the other on the left, in Performance mode or through View -> YouTube songs or YouTube SongList

Or press the keys (CTRL + ALT + Y)



As you can see in the image, this function allows you to search and display on the screen the songs present directly on YouTube through the search for the title and the artist.

This function requires an internet connection.

Within the function, a search filter is already set for the karaoke backing tracks, in addition to the display, it is also possible to import them into a SongList of the database and enter the title, artist, author, key.

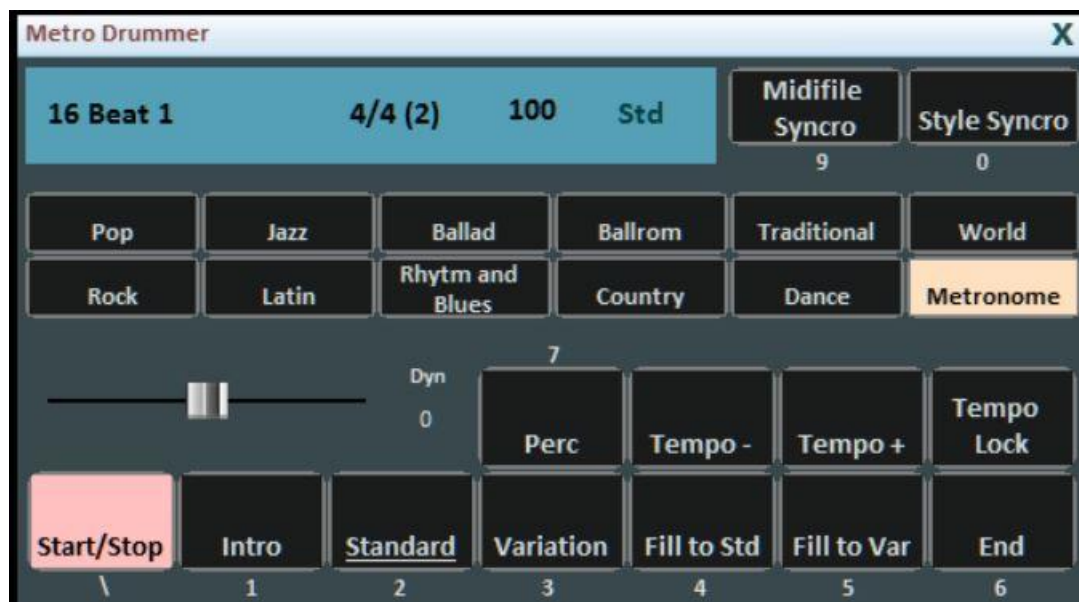
Attention: It is not possible to modify the song and download the song itself. It is only possible to import the link into the database and recall it as if it were any piece of our database.

In addition to the search function, it is possible to view a list of songs from **Youtube links** by simply clicking on **YouTube SongList** (*CTRL+ALT+L*)

Once the YouTube file has been launched, it is possible to remove an initial part (for example, to skip an unwanted introduction) by right-clicking on Performance and selecting Insert **YouTube start point**, inserting the seconds in order to start the song from the desired point.

METRODRUMMER

With the MetroDrummer you can use a real electronic drum with rhythmic patterns, accessible through **View -> MetroDrummer** or through the MDR button located on the right side of the Performance mode (**CTRL+ALT+B**)



The Metrodrummer can be used independently by reproducing the various rhythms (more than 220) with classic drum patterns, such as Intro, Standard, Variation and so on.

Very useful, for example, when you want to perform acoustic pieces with the need for a basic rhythmic structure (*keys: \ 1 2 3 4 5 6 and 7 for the various drum patterns*)

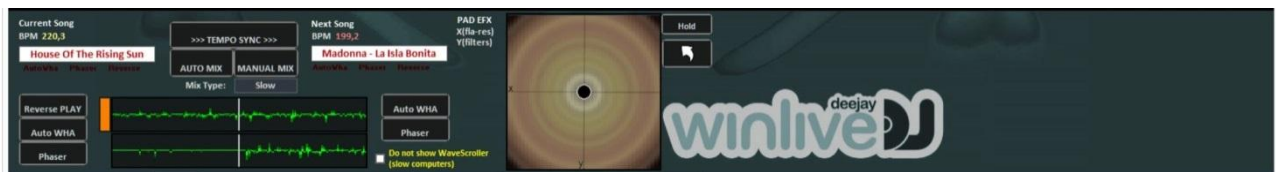
The MetroDrummer can also be used as an electronic metronome for our classic teaching exercises by pressing the METRONOME button

Furthermore, with MetroDrummer it is possible to synchronize our midifiles with the various rhythms, for example to perform a MEDLEY live by playing the various midifiles that we will perform at the same rhythm.

Click on MIDIFILE SYNCRO (*key: 9*) so that the first midifile and then all the other midifiles that we want to play will start with the present rhythm while with STYLE SYNCRO (*key: 0*) it is the midifile that synchronizes the rhythm of the MetroDrummer.

WINLIVE DJ CONTROL

Simplified section for DJs, accessible through View -> Winlive DJ control or through the WDJ button in Performance mode (*keys: CTRL+ALT+J*)



Winlive DJ mode with BPM recognition for Audio files with real-time effects, allows you to perform both manual and automatic mixes.

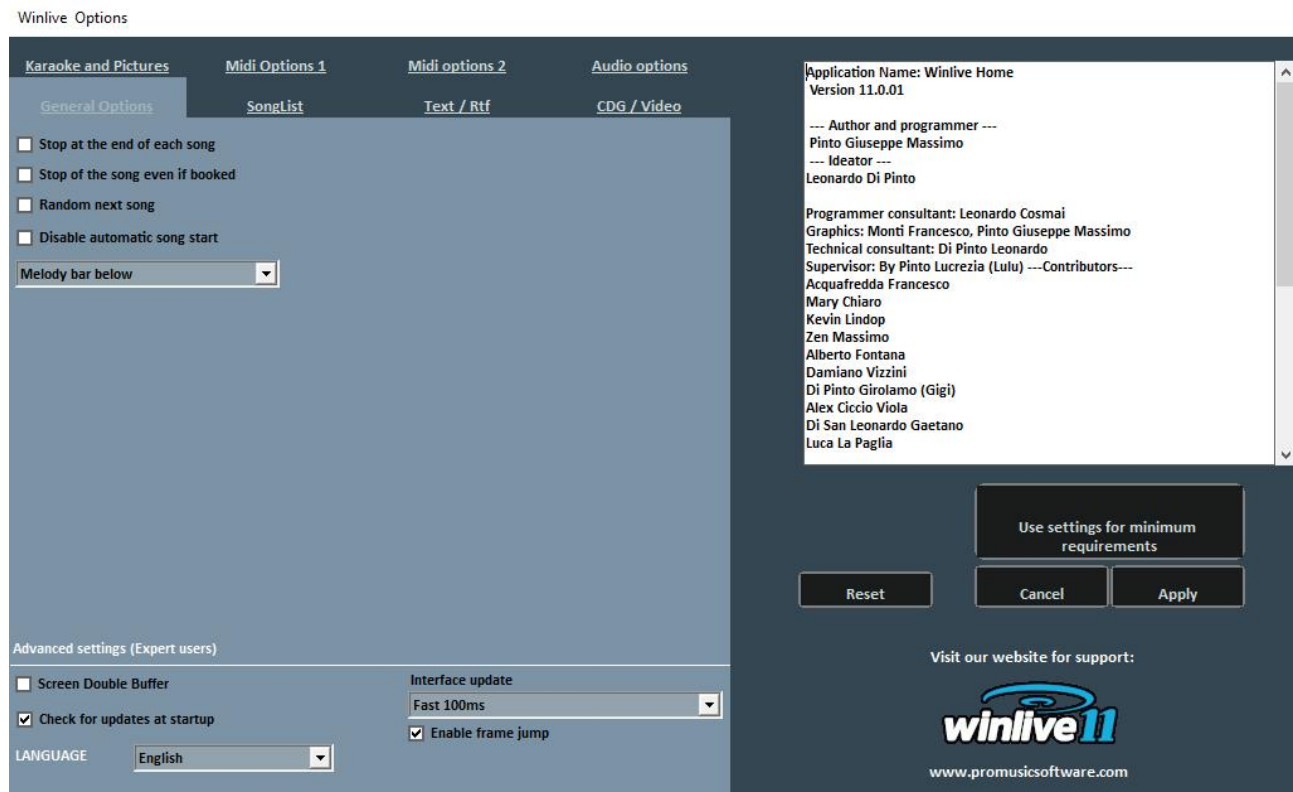
To perform the Automatic mix with the first track in play and the second one booked, just click first on Tempo Sync and then on Auto mix, in this way Winlive DJ will automatically switch from one track to another.

In order to mix manually, so with the first track in play and the second one booked, just click first on Tempo sync and then on Manual mix. In this case, you will find a writing in red (Mix 2%). Click on it to advance the mixing percentage and gradually switch from one track to another.

In addition to the various ways of mixing, the Winlive DJ also allows you to insert effects such as Reverse Play, auto WHA and Phaser that can be used through the pad on the right.

Options

General Options:



Stop at the end of each song

Disables automatic reservation of the next song in the list

Stop of the song even if reserved

Disables automatic song playback even if reserved

Random next song

Randomly book the next song

Disable automatic song start

Each song requested does not start automatically but is started with the enter key

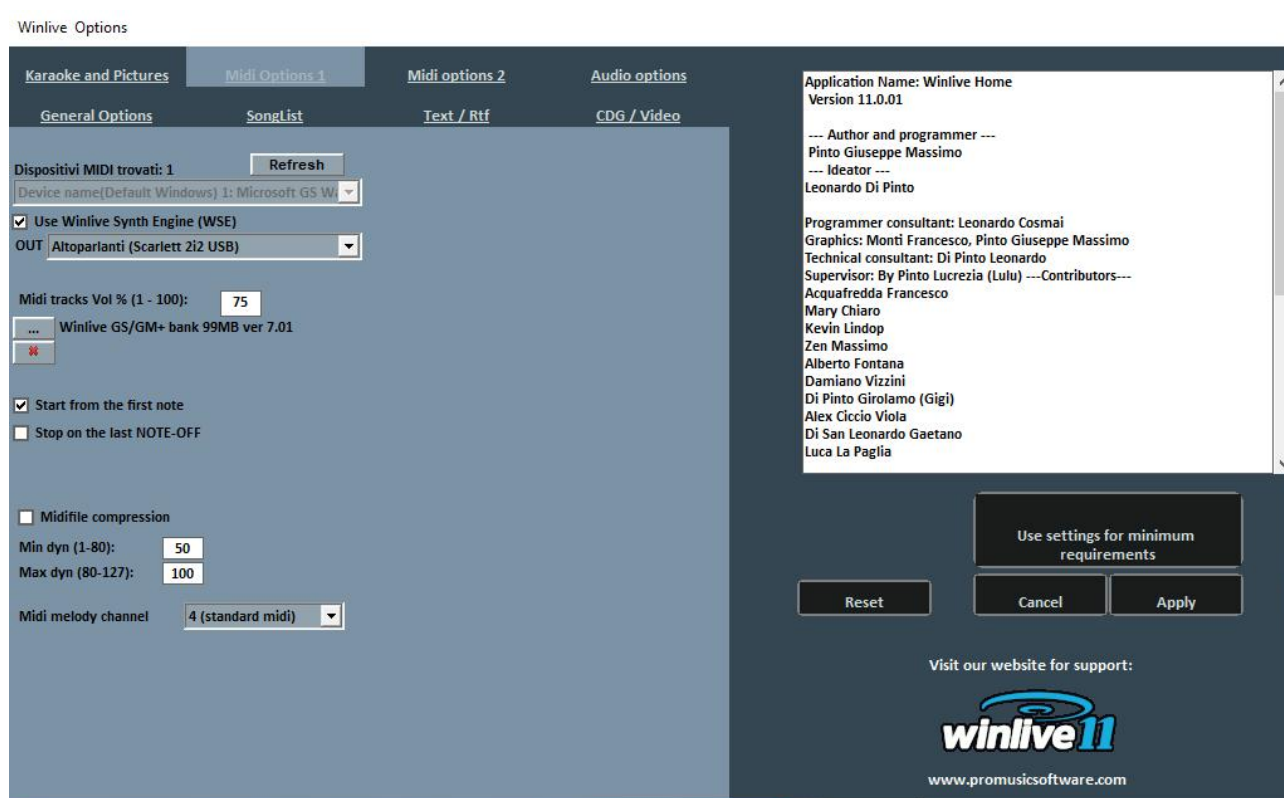
Sliding Melody Bar

The melody bar, which can be called up from the CTRL + E performance, can be fixed in screens or sliding

View markers in the Melody bar

As a description

Midi 1 options:



Device Midi

It is possible to set a device for Midi both physical (Expander, Keyboard) and virtual (Roland VSC, Microsoft SoftSynth, etc.).

The Refresh key updates the list if you have just connected a new device.

Use Winlive Synth Engine (WSE)

This feature allows you to use the digital sound bank of the WINLIVE HOME 11 without being bound by external expanders.

Out

Default output for the output of the Midi stream with the possibility of setting the right or left channel of the indicated output

Midi Out + WSE

Allows you to use the Winlive Synth Engine with a midi out to be selected in midi devices.

...

It allows you to select another digital sound bank (soundfont .sf2) With **X** you can reset and restore the Winlive sound bank

Start from the First Note

If checked, it allows you to position yourself directly on the first note useful when opening the Midi File, thus allowing immediate access.

Stop on the last NOTE-OFF

If checked, it allows you to end the song at the last NOTE-OFF, truncating any tail of the sound.

Midi tracks Vol% (1-100)

It allows the variation of the general volume of midi tracks in percentage.

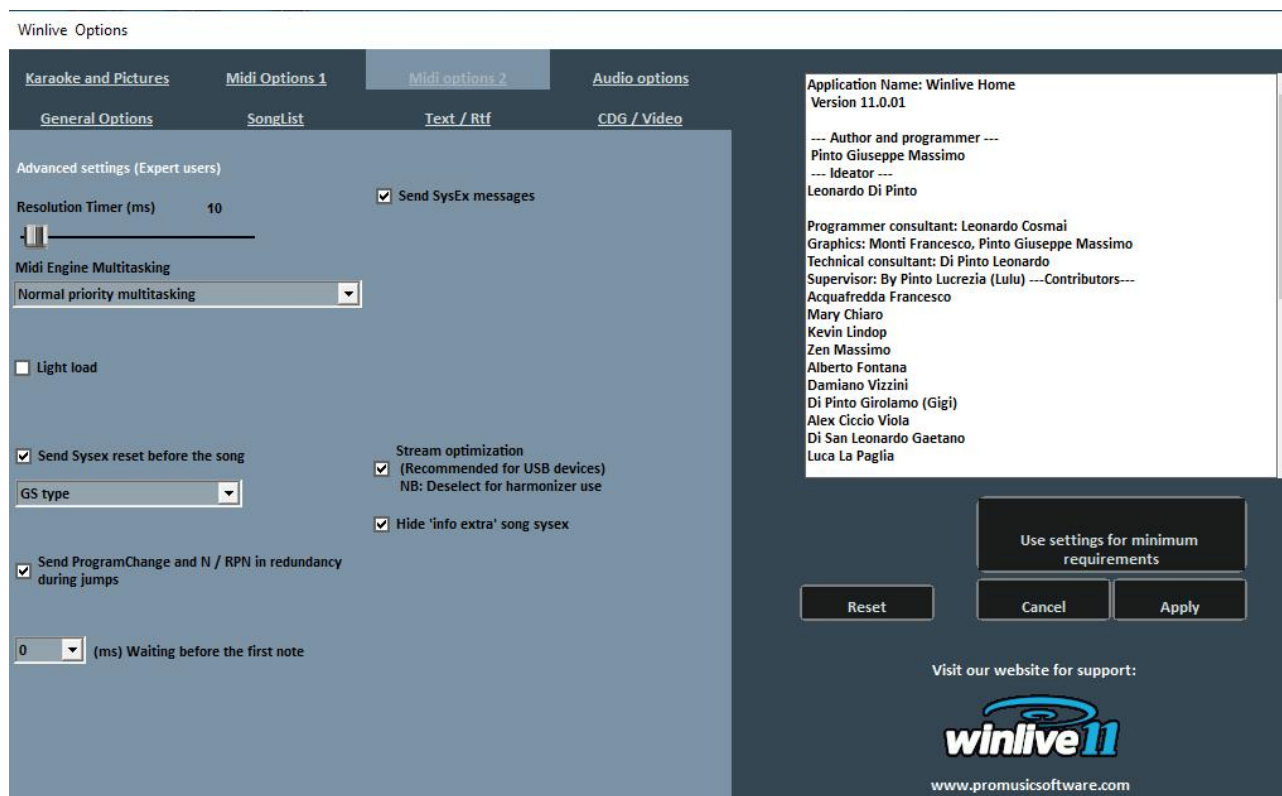
Midifile compression

Enables compression of note dynamics of midi files according to the min and max values set below.

Midi melody channel

Defines the midi channel for the melody (as standard set on midi channel 4)

Midi 2 options:



Resolution timer

Midi messages are sent in bulk every tot milliseconds. Usually 10 milliseconds is the optimal resolution.

An increase in the timer decreases the CPU load but could clog the Midi device, a decrease better distributes the midi messages but could weigh on slow CPUs.

In general, the default working range within which the time is perceptibly precise varies from 5 to 30 milliseconds.

Midi Engine Multitasking

The multitasking midi engine allows the execution of multiple midi streams simultaneously, increasing the loading and execution speed, excellent for computers with good performance.

Filter Non GM-GS messages

Leave out the redundant midi events considered useless for the reproduction of Midi files like Control Change etc ...

Some devices with advanced functions such as Karaoke or Vocalist output, in combination with some specific songs, may need to send these messages.

Deselect it only if you encounter such problems.

Light Load

Leave out some midi events like Pitch-bend, AfterTouch etc ...

Enable it only if you experience slowdowns in Midi playback.

Notes Partial OFF

An alternative way to use the pitch change reset, paused and at the end of the song.

Do not enable it if you use an Expander otherwise the notes will decay very slowly

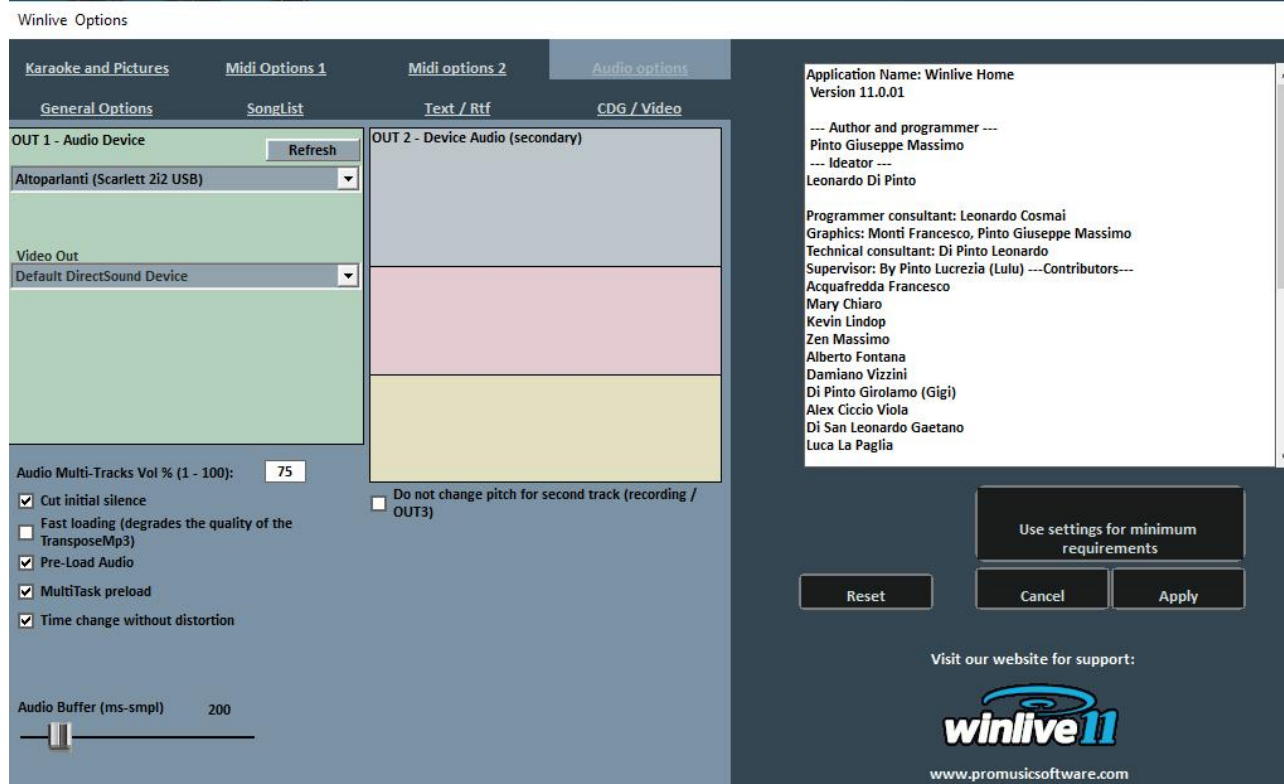
Send Reset Sysex before the song

Send the Sysex standard reset message before each midi song, the type of reset message (GM, GS etc.) can be chosen from the drop-down menu just below.

Program changes start at 1

By convention, the displayed program changes can start from 1 instead of 0 (only for visual indication)

Audio Options:



On this screen you can set up to 4 audio outputs and the audio present in the video

Audio Device OUT 1 – OUT 2 It is possible to set a device for the output audio typically a sound card.

And for each output we can decide whether to use it in stereo or mono (left or right)
The Refresh key updates the list if you have just connected a new device.

Audio Multi-Track vol

Here the volume for multitrack songs is set

Cut the initial silence

If checked, it allows the execution of audio files starting directly from the first audible part. It is useful to check it if you want immediate execution even for audio tracks, especially CDGs that sometimes contain a silent part at the beginning that can last even more than 10 seconds.

Fast loading

Ability to load on the fly, even faster on audio files.

The increase in speed is not very evident since Winlive is already very fast in a normal way. We recommend that you enable this option only if you really need to play the backing tracks in real-time as it may reduce the quality of the transpose on some sound cards.

Pre-Load Audio

If checked, this option allows you to load the audio song into memory at the time of booking, so that when it is played the song starts faster.

MultiTask preload

If checked, this option allows you to speed up the loading of the songs.

Time change without distortion

It allows the change of time without the song distorting.

Compression of volumes

Enable volume compression on audio, for details go to tools -> Winlive audio options.

Enable Gain

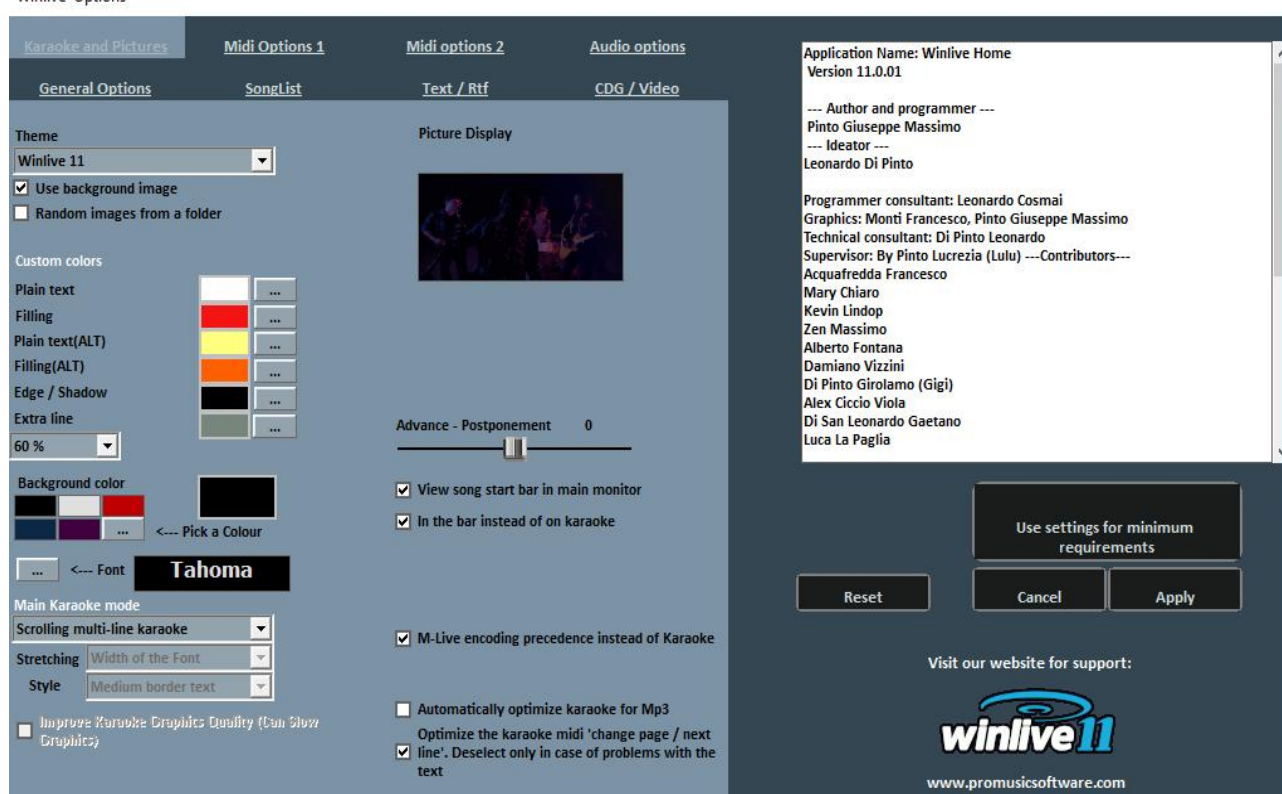
Enable the use of gain in the virtual mixer.

Audio Buffer

Set the buffer size. Increase this parameter in case of interruptions when playing audio and video files. It is recommended not to decrease from the default value.

Karaoke and pictures:

Winlive Options



From this screen you can change the graphic theme of the program, the background image, customize the colours of the text and the background as well as the character of the Karaoke and more.

Theme

Allows you to select a graphic theme for Winlive.

The theme affects the background and colour of the text, the fill and the shadows or effects.

Use background image

If checked, it matches by default the background image of the theme for all executions.

Random images from a folder

It is possible to select a folder from which Winlive loads images randomly and associates them with each song.

Custom colours

Allows customization of colours for text, fill and so on

By extra line, we mean the extra lines following the running text

Background colour

In the absence of a background image, it is possible to change the background colour

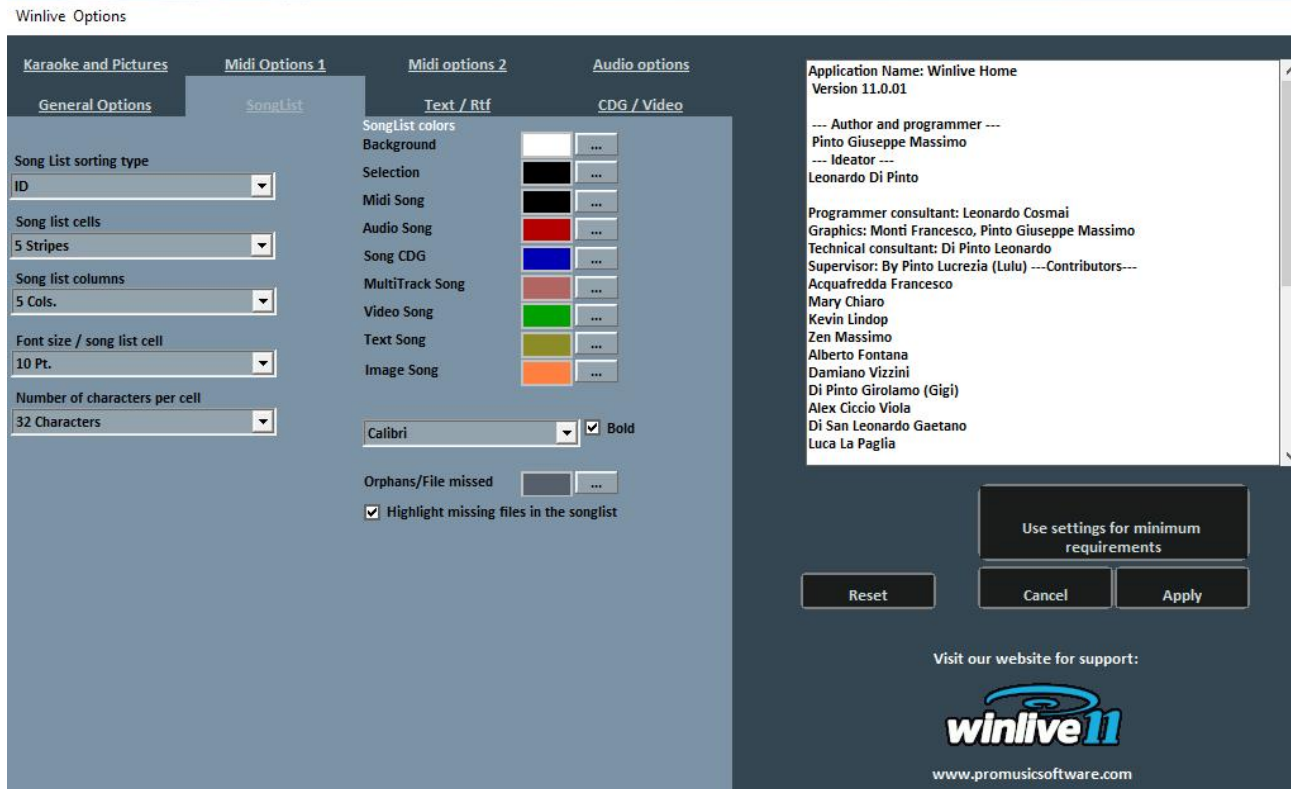
Font

It is possible to establish a character common to all the text display modes

Main Karaoke mode

I come seven modes and parameters for displaying the text in the main monitor
It is also possible to improve the graphic quality of karaoke (not recommended for "slow" computers)

SongList:



SongList sort type

It is possible to choose the sorting order for all the SongLists

ID = insertion order, the last inserted will go to the end

TITLE = by title, INTERPRETER = by interpreter, AUTHOR = by author,

GENRE_NOTES = for the genre of the song or for the relative annotations

TYPE = by type of song (e.g. midi, mp3, video, etc.)

The sorting order of the SongList can be selected by combining different fields.

You can use the Order field, which allows you to make a customized sorting of the lists as defined in the database. For a specific sorting for each SongList, refer to the SongList editor function in the instrument voice.

SongList cells

Allows you to set the size of the cells. Setting two cells per row gives you the largest dimensions for the cells.

SongList columns

Allows you to set the number of columns to be displayed in the SongList.

Font size / SongList cell

It allows you to set the font size within the cells of all the SongLists.

Number of characters per cell

It is used to set the maximum number of characters that each cell must have.

SongList position

You can view the SongList at the bottom, left or right side

Manage interpreter / author / time field etc.

Interpreter to the right of the title

It allows you to choose where to place the interpreter of a song.

Typing in SongList

It allows you to do a smart search, even writing only the first letters of the song.

Grid style

Allows you to adjust the border of the cells of all the SongLists.

Text style

Allows you to adjust the evidence of the text within the SongLists.

SongList colours

It allows the variation of the colours displayed within the SongList, assigning a different colour for each type of file, as well as for the background and selection.

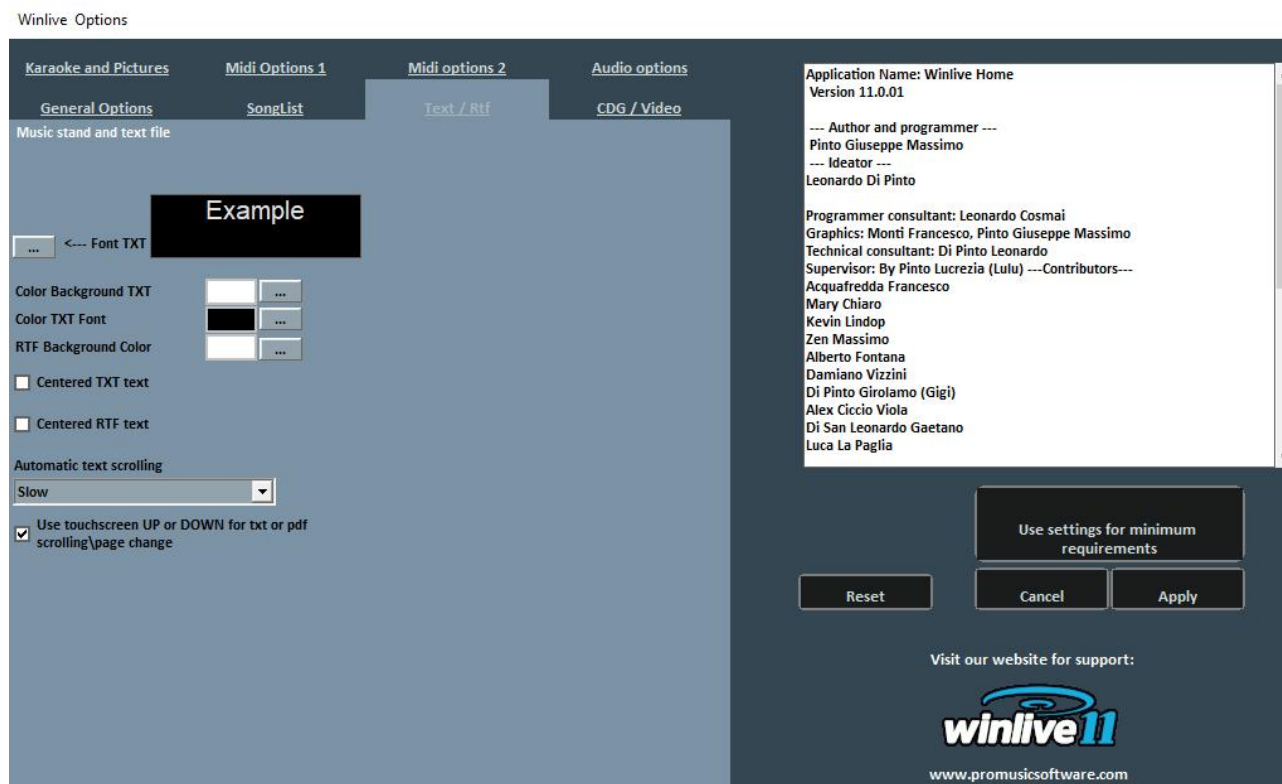
Highlight orphaned files in the SongList

This important function identifies orphan files, i.e. files whose path does not match the one in the database. If the files are blackened, it means that they are unplayable.

SongList font

Allows the adjustment of characters within the SongList.

Chords and Texts:



TXT font

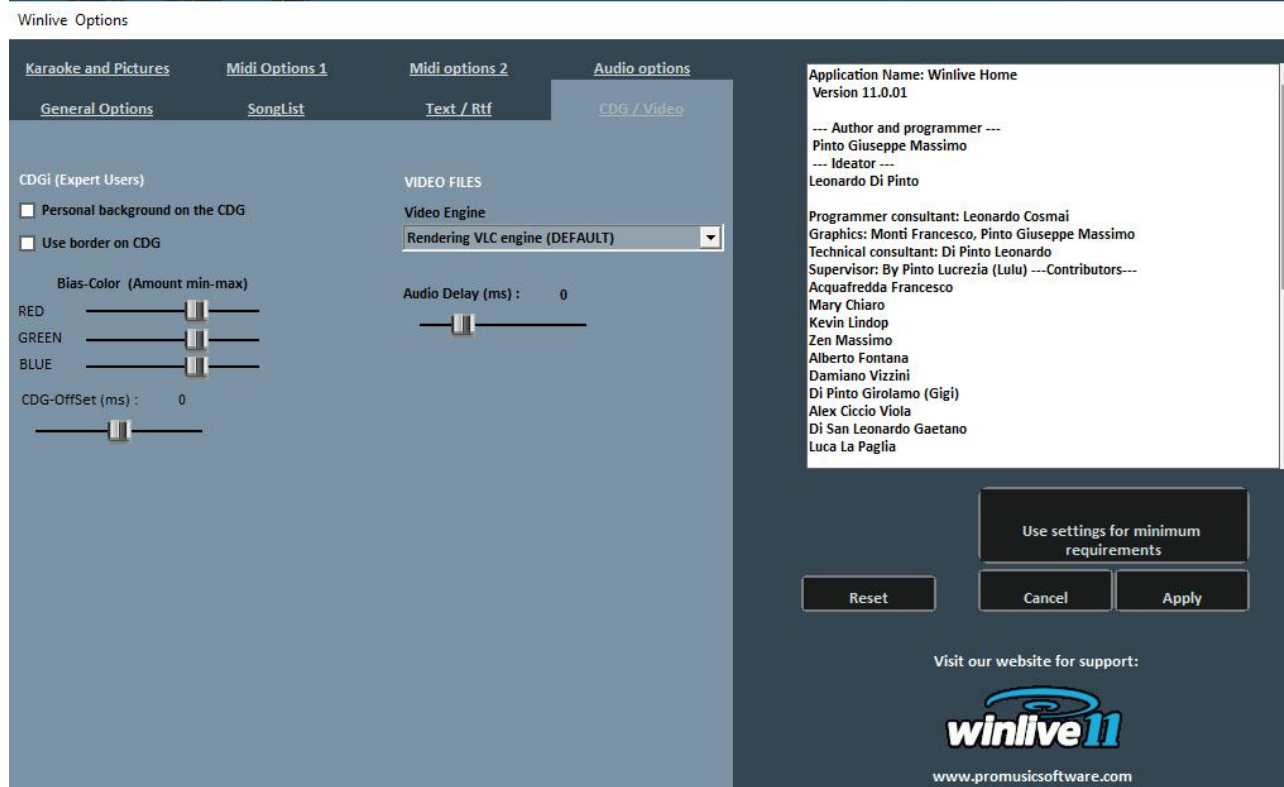
Allows you to change the font, colour and size of the text beyond the background.

It is also possible to center the TXT text and the RTF text

Automatic text scrolling

When associating a text (txt or rtf) with a file we can decide the scrolling speed of the text. Remember that you can use the K and L keys to move forward or backward in the text.

CDG / Video (Expert users only)



It is good to interact with these parameters only if you are fully aware of the structure and characteristics of the Mp3 + CDG (Graphic Karaoke) files.

CDG (expert users)

Personal background on the CDG

If enabled, use the current background colour instead of the original background colour in the CDG.

Use board on the GDG

Enable border colouring in the CDG where available.

Disabling, by default, allows an improvement in the reproduction of CDGs on the computer that do not need a border like on a TV.

Bias-Colour

You can adjust the RGB colour gamut (Red, Green, Blue), higher values result in greater brightness for the respective colour gamut.

VIDEO FILES

Video Engine

Select the video "engine" to read the files

Audio Delay

Establishes the audio delay compared to video. It is used when there is no perfect synchrony between video and audio

OPERATIONS ON THE OPTIONS

- **TO APPLY THE OPTIONS IT IS NECESSARY TO CLICK ON "APPLY"**
- **TO EXIT THE SCREEN BY LEAVING THE MODIFICATIONS CLICK ON "CANCEL"**

With IMPORT you can import configuration options from one computer to another by exporting them with EXPORT

With RESET the "factory" configurations are restored

USE SETTINGS FOR MINIMUM REQUIREMENTS to set the minimum options compatible with less performing computers

SHORTCUTS

Here is a list of keys (shortcuts) and related functions:

(Windows)

Spacebar	Opens the SongList or Pause / Play of the Song
Arrow Keys	Opens the relevant SongList
F1, F2, ..., F10	Opens the relevant SongList
Shift + [F1 .. F10]	Opens the relative SongList
Ctrl + [F1 .. F10]	Opens the relative SongList
Shift + Ctrl + [1 .. 0]	Opens the relative SongList
O	Play from the beginning of the song
Q	Fade Out to the booked Song
W	Change the size of the Karaoke text (small Med. Grd.)
Shift + W	Change the text mode in the Main monitor
Ctrl + W	Change the text mode in the karaoke monitor
F	Next
R	Back
M	Melody (ch. 4) Yes / No [Song Midi]
T	Restores the original Tempo [Song Midi]
U	Solo Melody (Ch. 4) [Song Midi]
N	Channels on / off as originally
P	Talk Over (on key pressed)
A	Activate all channels [Song Midi]
D	Drum only (Ch. 10) [Song Midi]
C	Show / Hide chords
Shift + C	Displays / Hides the Chords in the Karaoke Monitor
Y	Mix with the booked Song
Shift + Y	Manual Mixing (then press Y) of the booked song
H	Scrolls through the mixing modes
X	Opens the mixer
I	Opens the Mixer in Instruments mode (you can press the 1..0 and Q ... Y keys for the On / Off tracks)
V	Vocalist track (Ch. 16) Yes / No [Song Midi]
B	Bass only (Ch. 2) and Drums (Ch. 10) [Song Midi]
Enter	Send Play of the booked Song
Pause	Pause / Play
+	Increase by a semitone
-	Decrease of a semitone
Pg. Up	Tempo increase [Song Midi]
Pg. Down	Tempo decrease [Song Midi]
Ctrl + +	Increase a Semitone of the booked song
Ctrl + -	Decrement of a Semitone of the Booked song
Ctrl + Pg. Up	Tempo increase of the booked song [Midi and Audio]

Ctrl + Pg. Down	Tempo Decrement of the booked Song [Midi and Audio]
Ctrl + M	Melody (Ch. 4) of the booked song Yes / No [Song Midi]
End	Stop the booked song (STOP)
Z	Fullscreen mode
Backspace	Opens the song search window in the SongList
Tab	Scrolls between occurrences of searches in the SongList
S	Audio Sampler
E	Show / Hide the Melody Bar
Ctrl + Q / Ctrl + S	Virtual save current song
Ctrl + K	Enable / Disable the Karaoke Monitor
Ctrl + J	Enable / Disable the Clone Monitor
,	Enable / Disable Drum Part Off midi drums
.	Enable / Disable Drum Part Off midi percussion effects
Shift + M	Enable / Disable any second associated track
Shift + Pg. Up	Increase the Song Volume
Shift + Pg. Down	Decreases the Song Volume
Shift + [F11]	Open the whole database
Home	Open Song List
Del	Only if in loop Markers: Exit the loop
Y	Only if it is Groove (midi or audio) does it exit the groove at the end

Performance Display (With the SongList open):

Home / Home	First column of the SongList
End	Last column of the SongList
Initial	Search for the first song with the initial
Space	Book the Song and close the SongList
Ins	Insert the Song into the Temporary Song List (F10)
Pg. Up	First line of the SongList
Pg. Down	Last line of the SongList
Backspace	Search for a Song
Tab	Repeat search
Enter / Return	Play of the Song and close the SongList
Esc	Close the SongList
Del	Only in F10: delete from the F10 list

Audio Sampler

\	Stop on all samplers
S	Opens / closes and stops all samplers
1..2..3 0	Play of the Sample
CTRL + 1..2..3 0	Select the set

Open search

TAB	Search Song in the current SongList
------------	-------------------------------------

In Database

Ctrl + K

Enable / Disable the Karaoke Monitor

ENTER

Send Play of the Song

Esc

Stop of the Song

E

Edit the database cell

(Mac Osx)

Performance view (with the SongList closed):

Spacebar	Opens the SongList or Pause / Play of the Song
Arrow Keys	Opens the relevant SongList
O	Play from the beginning of the song
Q	Fade Out to the booked Song
W	Change the size of the Karaoke text (small Med. Grd.)
Shift + W	Change the text mode in the Main monitor
Ctrl + W	Change the text mode in the karaoke monitor
F	Next
R	Back
M	Melody (ch. 4) Yes / No [Song Midi]
T	Restores the original Tempo [Song Midi]
U	Solo Melody (Ch. 4) [Song Midi]
N	Channels on / off as originally
P	Talk Over (on key pressed)
A	Activate all channels [Song Midi]
D	Drum only (Ch. 10) [Song Midi]
C	Show / Hide chords
Shift + C	Displays / Hides the Chords in the Karaoke Monitor
Y	Mix with the booked Song
Shift + Y	Manual Mixing (then press Y) of the booked song
H	Scrolls through the mixing modes
X	Opens the mixer
I	Opens the Mixer in Instruments mode (you can press the 1..0 and Q ... Y keys for the On / Off tracks)
V	Vocalist track (Ch. 16) Yes / No [Song Midi]
B	Bass only (Ch. 2) and Drums (Ch. 10) [Song Midi]
Enter	Send Play of the booked Song
Pause	Pause / Play
+	Increase by a semitone
-	Decrease of a semitone
Pg. Up	Tempo increase [Song Midi]
Pg. Down	Tempo decrease [Song Midi]
End	Stop the booked song (STOP)
Z	Fullscreen mode
Backspace	Opens the song search window in the SongList
Tab	Scrolls between occurrences of searches in the SongList
S	Audio Sampler
J	Pre Listening
E	Show / Hide the Melody Bar
Ctrl + Q / Ctrl + S	Virtual save current song
Ctrl + K	Enable / Disable the Karaoke Monitor
Ctrl + J	Enable / Disable the Clone Monitor
Shift + Pg. Down	Decreases the Song Volume
Shift + [F11]	Open the whole database
Home	Open Song List
Del	Only if in loop Markers: Exit the loop

Y Only if it is Groove (midi or audio) does it exit the groove at the end

Performance Display (With the SongList open):

Home / Home	First column of the SongList
End	Last column of the SongList
Initial	Search for the first song with the initial
Space	Book the Song and close the SongList
Ins	Insert the Song into the Temporary Song List (F10)
Pg. Up	First line of the SongList
Pg. Down	Last line of the SongList
Backspace	Search for a Song
Tab	Repeat search
Enter / Return	Play of the Song and close the SongList
Esc	Close the SongList
Del	Only in F10: delete from the F10 list

Audio Sampler

\	Stop on all samplers
S	Opens / closes and stops all samplers
1..2..3 0	Play of the Sample
CTRL + 1..2..3 0	Select the set

Open search

TAB	Search Song in the current SongList
------------	-------------------------------------

In Database

Ctrl + K	Enable / Disable the Karaoke Monitor
ENER	Send Play of the Song
Esc	Stop of the Song
E	Edit the database cell

Tips:

- 1) Winlive is structured to manage many functions while performing in a show or concert, through the exclusive use of the computer keyboard thus avoiding the inconvenience of having to manage the functions with the use of the mouse, which implies longer time.
- 2) It is advisable to keep a printout of the hot keys on hand, generally after a couple of performances in order to memorize the keys and managing the program in a more immediate way.

VIDEO TUTORIAL

We can connect with the latest video tutorial available on Youtube

MOBILE SOFTWARE (iOS/Android)

List of APPs for smartphones and tablets produced by Promusicsoftware. They are available for both iOS and Android

WINLIVE ON FACEBOOK

The official Facebook page of Promusicsoftware

Demo Songs

DEMO SONGS

A songlist with various demo backing tracks

BACKING TRACKS

Links to major backing track producers

ADDENDUM

Specifications and compatibility

Funzione	Caratteristica
File compatibility:	midi, kar, mp3, wav, wmt, cdg, cdg-zip, avi, mpg, mp4, flv, wma, lrc, txt, rtf, jpg, gif, bmp, ytb YouTube, pdf
Midi format compatibility:	Tipo 0, Tipo1, Smf 16 tracce
Lyrics compatibility:	Tune1000, M-live, Solton, TextInKar, MP3TagV2, MP3 M-liveText
Reset mode:	GS, ensures full compatibility with most midi songs
Maximum number of songs in the list:	120.000
Maximum song number in database:	> 200.000
Average song access time:	0.05 - 0.2 sec. calculated on 2Gzh, 2GB ram
Number of pre-set sounds:	344 Instruments * + 32 DrumKit * + 32 User Sounds

The midi engine has been redesigned from scratch compared to all previous versions of Winlive, therefore slight differences in reproduction may be noticed.

Now the management of the midi takes place totally in MultiTasking, an independent process whereby it is now possible to open windows and programs while working on it, reducing Winlive to an icon even during the execution of a Midi File, without incurring in slowdowns.

* There are a lot of usable midi sounds but, by convention, only the name of the first bank displayed on the program (e.g. for Hard FM Piano bank024-pc: 006 the name ELECTRIC PIANO 2 bank will be displayed: 000- pc006). If the device is enabled to reproduce this sound, it will use the correct sound.

LEGAL NOTICES

WINLIVE HOME user license

READ THIS DOCUMENT CAREFULLY BEFORE INSTALLING THE PROGRAM.

THE PROGRAM INCLUDED IN THIS DISC IS LICENSED TO THE USER. YOU AGREE TO COMPLY WITH THE TERMS OF THIS LICENSE OF USE. WARNING: THIS PROGRAM IS PROTECTED BY COPYRIGHT LAWS AND INTERNATIONAL TREATIES. THE SOFTWARE PRODUCT IS LICENSED, IT IS NOT SOLD. UNAUTHORIZED REPRODUCTION OR DISTRIBUTION OF THIS PROGRAM, OR PART OF ITS, MAY RESULT IN SEVERE CRIMINAL AND CIVIL PENALTIES.

1 - User rights

PRO MUSIC SOFTWARE grants the end user the right to use a copy of the attached Software program on a single computer. The Software is intended "in use" on a computer when it is loaded on the temporary memory (RAM) or installed on the permanent memory (eg hard disk, CDROM or other storage medium) of that computer.

2 - Copyright

The software is owned by the PRO MUSIC SOFTWARE and is protected by copyright laws in force in Italy; by international provisions and treaties and by all other applicable national laws. In any case, the user cannot reproduce the manual or part of it and the written material accompanying the Software.

3 - Warranty limits

PRO MUSIC SOFTWARE warrants that the Software will function in substantial compliance with the manual. To protect the user, it will be possible to use a maximum of 3 activations in total. We remind you that even in case of formatting a new activation will have to be used. For further activations please contact Promusicsoftware

4 - Limits of liability

In no case can PRO MUSIC SOFTWARE be held liable for damages (including without limitation: damage due to loss or loss of earnings, business interruption, loss of information, penalties or other economic losses) deriving from the use or inability to do use of the Software, even if the PRO MUSIC SOFTWARE has been warned of the possibility of such damages.

5 - Installation

WINLIVE HOME uses a self-installing installation package.

At the time of installation, it will be possible to choose the installation path and other parameters. Note that registry entries and system settings may be changed to allow the correct functioning of the program itself.

6 - Other restrictions

The Setup in this Pro version is redistributable as it is. It is forbidden to reproduce even partial and the partial distribution of the individual files generated by the Setup. 120 minutes of FREE REMOTE ASSISTANCE and YOUTUBE SERVICE until **February 2022** are guaranteed.

Credits and Thanks

A special thanks is due to all BetaTesters as well as those who have worked on our Forum in order to make the program more and more in line with current standards, providing ideas and advice to make the program more efficient and pleasant.

Ideator: Leonardo Di Pinto

Author and programmer: Pinto Giuseppe Massimo

Programmer consultant: Leonardo Cosmai

Technical consultant: Leonardo Di Pinto

Graphics: Monti Francesco

Supervisor: Di Pinto Lucrezia (Lulu)

Contributors: Mary Chiaro, Di Pinto Girolamo (Gigi), Di Pinto Mariachiara, Acquafredda Francesco

External consultants: Vizzini Damiano, Kevin Lindop, Zen Massimo, Alberto Fontana, Dimarti Eber, Vernucci Massimo, De Iudicibus Mauro, Alex Ciccio Viola, Di San Leonardo Gaetano, Luca La Paglia

Made by ProMusicSoftware



www.promusicsoftware.com

info@promusicsoftware.com

PROMUSICSOFTWARE - Bisceglie (BT) - Italy

This guide generally follows the version of WINLIVE HOME / HOME SYNTH 11, we are not responsible for any omissions or inconsistencies as micro-updates released frequently may vary product specifications.